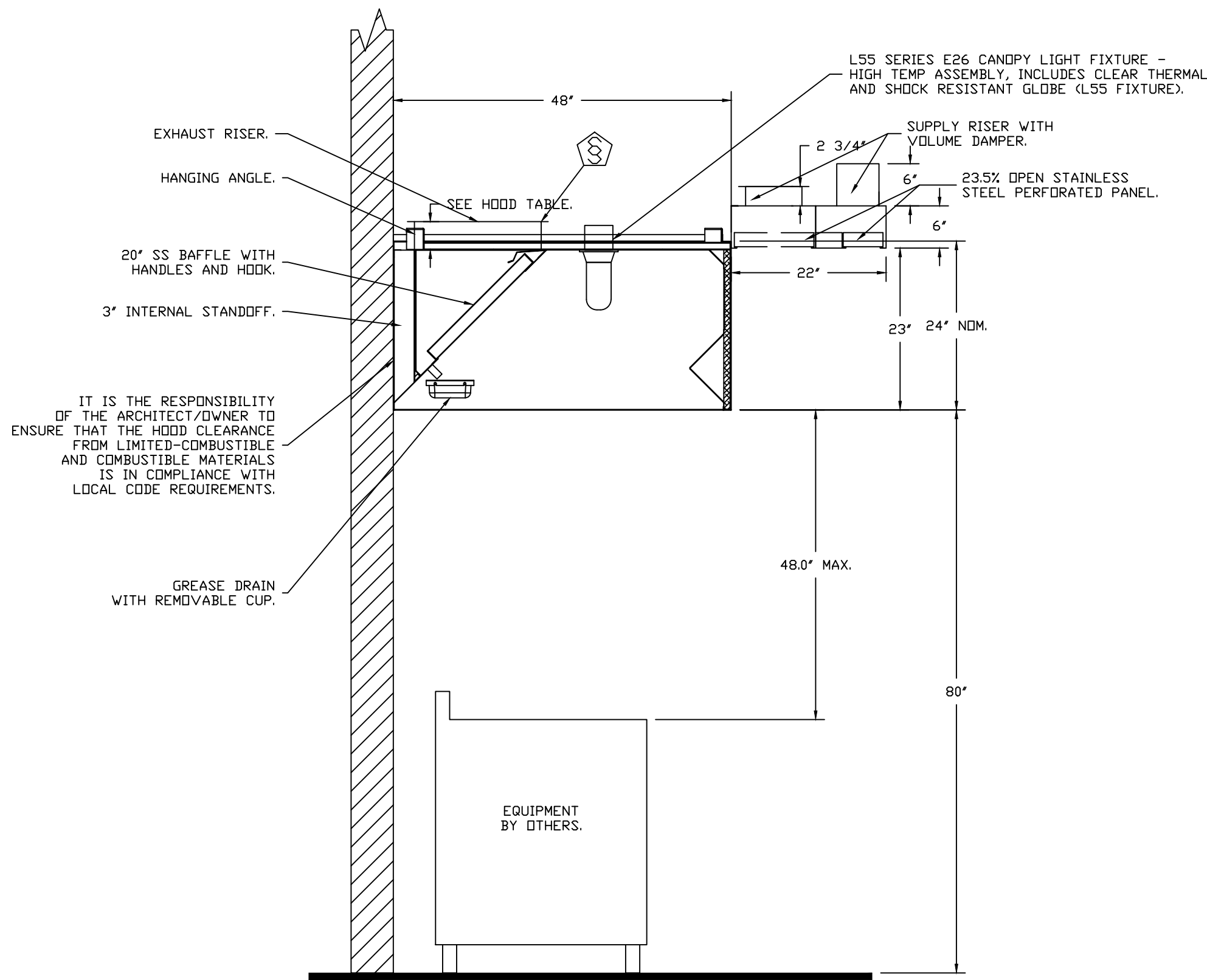


CAPTIVE-AIRE HOODS ARE BUILT IN COMPLIANCE WITH UL 710 AND NFPA 96 AND ARE RECOGNIZED BY ONE OR MORE OF THE FOLLOWING:

ETL SANITATION LISTED

ETL LISTED

FILE# 102900319PRT-001



NOTE: UNLESS OTHERWISE STATED, PANDA RESTAURANT GROUP SHALL PROVIDE ALL EQUIPMENT ON THE FOLLOWING CAPTIVEAIRE SHEETS, INCLUDING: HOODS, FIRE SYTEM, EXHAUST FANS, SUPPLY FAN, BATHROOM FAN AND ELECTRICAL INTERLOCK PACKAGE

DOUBLE WALL DUCT BY MECHANICAL PLEASE USE CONTACT BELOW FOR PRICING

ANSUL GAS VALVE:

THE ANSUL GAS VALVE IS PROVIDED BY CAPTIVEAIRE SYSTEMS. CONTACT OUR OFFICE WITH THE VALVE SIZE 3 DAYS IN ADVANCE OF WHEN IT IS NEEDED ON SITE.

FOR QUESTIONS CALL THE CAPTIVEAIRE SOUTHERN CALIFORNIA OFFICE

3002 DOW AVENUE, SUITE 410
TUSTIN, CA 92780
TEL: 714-957-1500 EMAIL: REG66@CAPTIVEAIRE.COM

REVISIONS

DESCRIPTION

REVISIONS:

ISSUE DATE:

DRAWN BY: AE

PANDA PROJECT #: D8164

PANDA STORE #: -

ARCH PROJECT #: 261-321

DATE: 1/26/20

DWG.#: 5294505

DRAWN BY: AH-86

SCALE: 3/4" = 1'-0"

MASTER DRAW

SHEET NO 2



PANDA EXPRESS, INC.
1683 Walnut Grove Ave.
Rosemead, California
91770
Telephone: 626.799.9898
Facsimile: 626.372.8288

All ideas, designs, arrangement and plans indicated or represented by this drawing are the property of Panda Express Inc. and were created for use on this specific project. None of these ideas, designs, arrangements or plans may be used by or disclosed to any person, firm, or corporation without the written permission of Panda Express Inc.

REVISIONS:

SOLUTION F.2 09.30.21

OWNER REVISIONS 01.27.22

ISSUE DATE:

ISSUE FOR PERMIT 01-29-21

ISSUE FOR BID 04-30-21

ISSUE FOR BID 2 11-02-21

ISSUE FOR BID (DT) 02-04-22

DRAWN BY: AE

PANDA PROJECT #: D8164

PANDA STORE #: -

ARCH PROJECT #: 261-321



FOR INFORMATION ONLY

PANDA EXPRESS

TRUE WARM & WELCOME
JEFFERSON AVE. & MORRIS DR.
NEWPORT NEWS, VA 23605

M-401

HOOD DETAIL PLAN

TRUE WARM & WELCOME 2300 R6

ISSUE FOR PERMIT 11-02-21

ISSUE FOR PERMIT 11-02-21