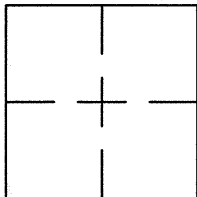


CORNER RECORDDocument Number CR 8875City of EDEN TOWNSHIPCounty of ALAMEDA, CaliforniaBrief Legal Description NGS BENCHMARK (HT0223) LOCATED IN THE CURB WITHIN W. BLOSSOM AVE**CORNER RECORD**

Government Corner ☐ Control ☒
 Meander ☐ Property ☐
 Rancho ☐ Other ☐
 Date of Survey 8/24/16

COORDINATES
(Optional)

N. 2072671
 E. 6095650
 Zone _____ Datum _____
 Elev. _____

Corner — Left as found ☒ Found and tagged ☐ Established ☐ Reestablished ☐ Rebuilt ☐

Identification and type of corner found: Evidence used to identify or procedure used to establish of reestablish the corner:
FOUND BRASS DISC IN CURB

THIS POINT WAS REFERENCED PRIOR TO A CONSTRUCTION PROJECT IN THE VICINITY.

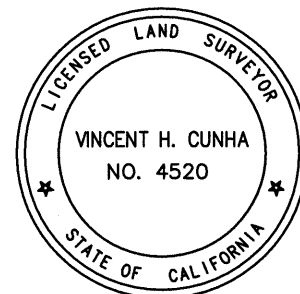
A description of the physical condition of the monument as found and as set or reset: _____
FOUND AND SET POINTS AS SHOWN ON PAGE 2.

THE TIES SHOWN HEREON ARE FOR THE PURPOSE OF PERPETUATING FOUND MONUMENTATION.

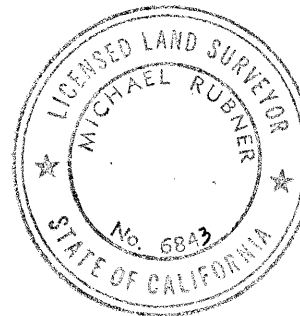
NO CLAIM IS MADE AS TO THE RELATIONSHIP OF THE POINTS OR LINES SHOWN HEREON TO
TRUE BOUNDARY LOCATIONS.

SURVEYOR'S STATEMENT

This Corner Record was prepared by me or under my direction in conformance with
 the Land Surveyors' Act on AUGUST 25, 2016.
 Signed Vincent H. Cunha L.S. Number LS 4520
VINCENT H. CUNHA

**COUNTY SURVEYOR'S STATEMENT**

This Corner Record was received 31 AUGUST 2016 and examined
 and filed 7 OCTOBER 2016.
 Signed Michael Rubner Title COUNTY SURVEYOR



County Surveyor's Comment _____

SPEC-2303-PRE

SCALE: 1"=30'

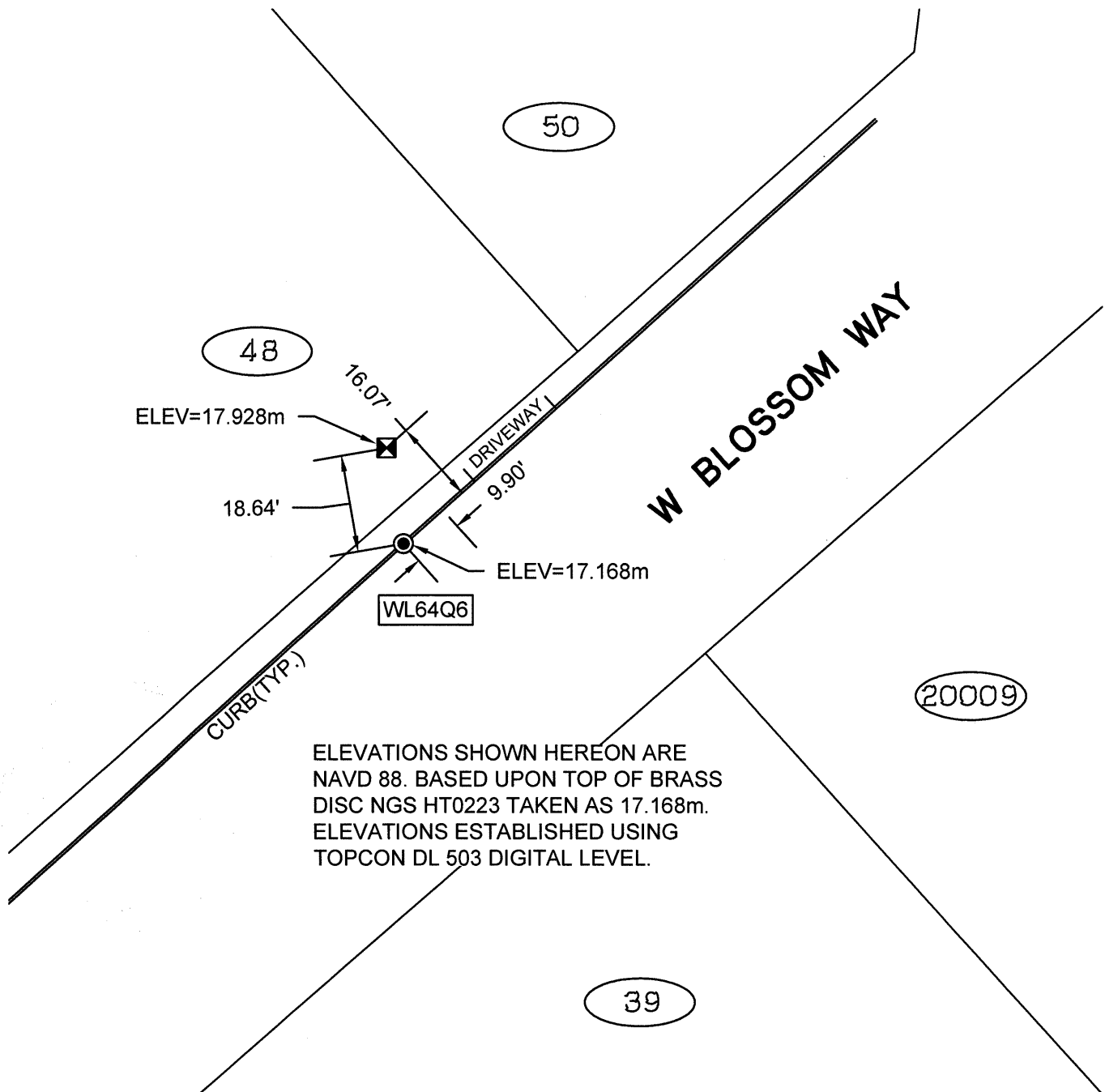
LEGEND

● FOUND NGS BENCHMARK PID HT0223 BRASS DISC IN CURB

☒ SET CUT SQUARE IN SOUTH SIDE OF SIGN BASE

AA##A# ALAMEDA COUNTY MONUMENT ID

19592 REFERENCE STREET ADDRESS



ELEVATIONS SHOWN HEREON ARE
NAVD 88. BASED UPON TOP OF BRASS
DISC NGS HT0223 TAKEN AS 17.168m.
ELEVATIONS ESTABLISHED USING
TOPCON DL 503 DIGITAL LEVEL.

216129-Meekland-CR14