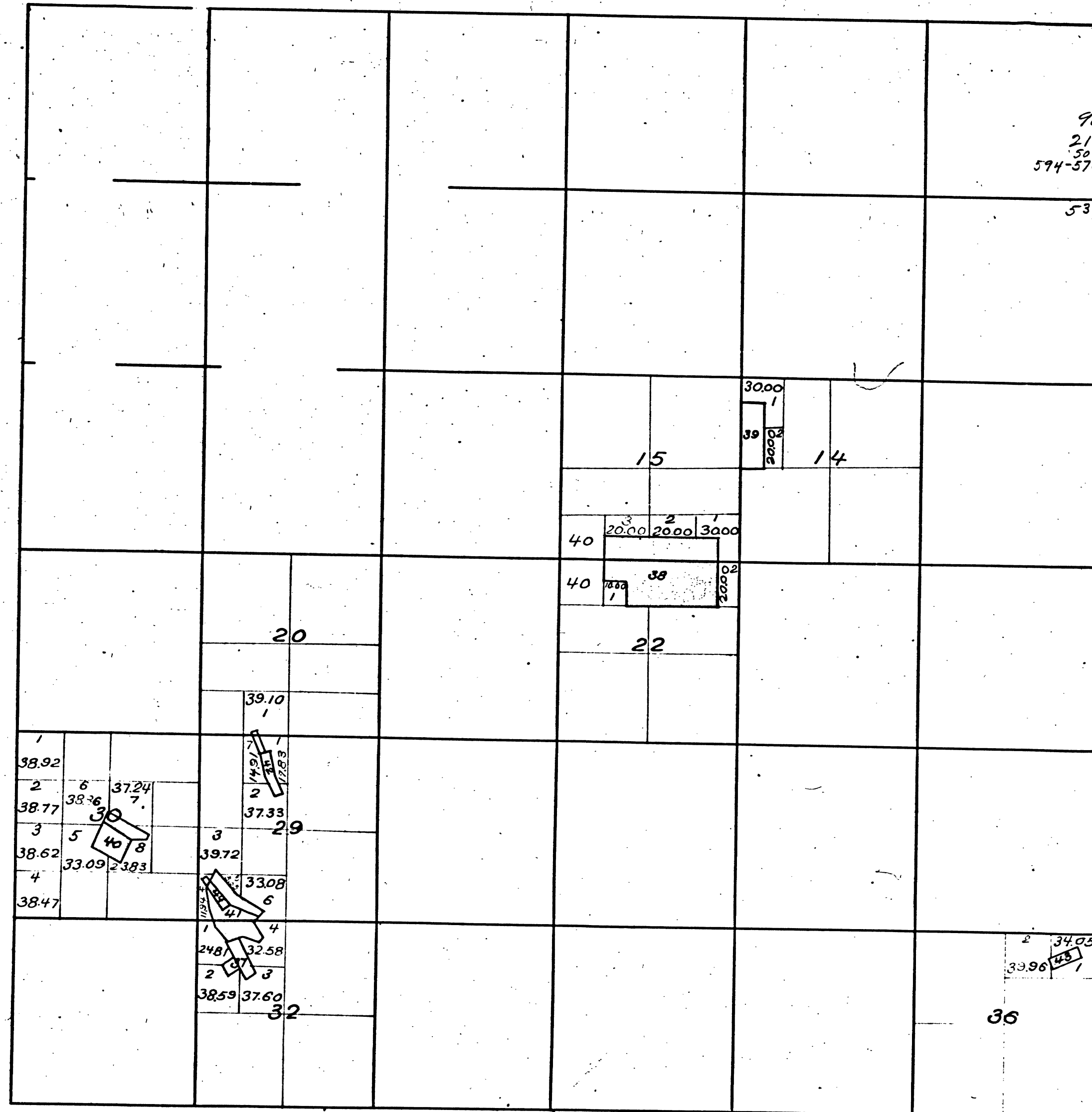


Township N°2 North, Range N°14 East, Mount Diablo Meridian.

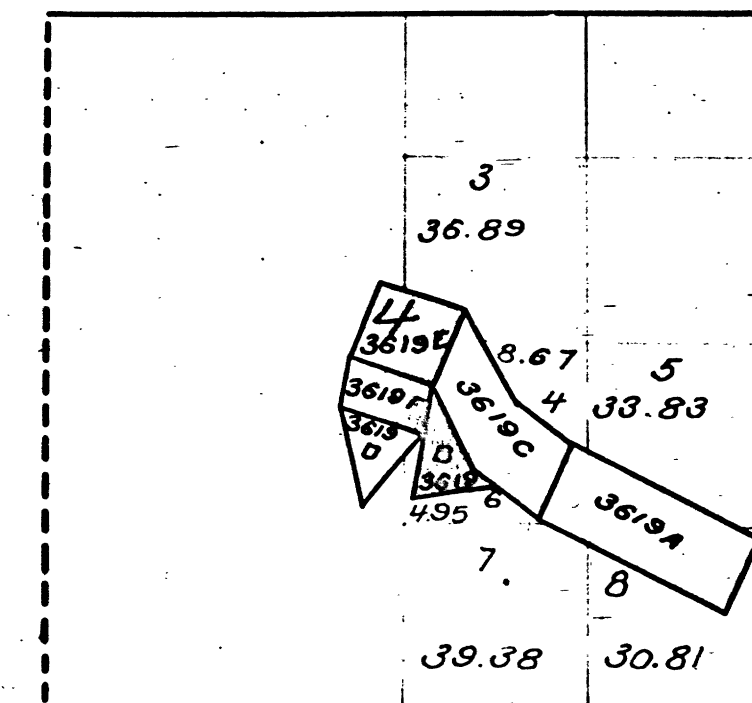
OC. 3.
1879



Entry Lot

- | | | |
|---------|----|---------------------------------|
| 1063- | 37 | Arbona Gold Quartz Claim. |
| 96 | 38 | Richard's Placer Gold Mine. |
| 10 | 39 | Finn Placer Claim. |
| 213 | 40 | Waters Quartz Mine & Mill Site. |
| 500 | 41 | Fatterson |
| 594-575 | 42 | Valparaiso |
| | 43 | Fairview |
| 537 | 44 | Lennan Gold Quartz Mine. |

Township N°2 North, Range N°14 East, Mount Diablo Meridian



- | | | | |
|--------|--|----------|--------------------------------------|
| 3619 A | Densmore Consolidated Quartz Mines and Mill Sites. | Densmore | Quartz Mine. |
| 3619 B | | | Mill Site. |
| 3619 C | | | Young America Quartz Mine. |
| 3619 D | | | Mill Site. |
| 3619 E | | | Young America Extension Quartz Mine. |
| 3619 F | | | Mill Site. |

The above diagram of Section 4, Township N°2 North, Range N°14 East, Mount Diablo Meridian, has been correctly copied from the original Plat as amended, and on file in this Office.
U.S. Surveyor General's Office,
San Francisco, California,
April 7, 1899

J. M. Gleaves.
U.S. Surv. Gen'l. Cal.

The above Diagram of Township N°2 North, Range N°14 East, Mount Diablo Meridian, correctly shows the amendments made in accordance with the Plats of Mining Surveys approved to date.
U.S. Surveyor General's Office,
San Francisco, California,
June, 28th 1876

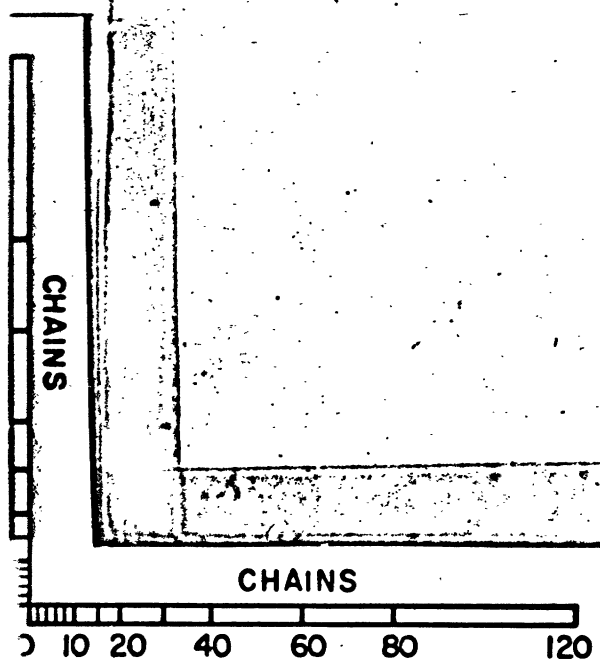
H. G. Pollins.

DEPARTMENT OF THE INTERIOR,
GENERAL LAND OFFICE,
Washington, D. C. Feb. 5, 1905.
I hereby certify that this is a true copy
of the plats of official survey of the lands
to which it relates, on file in this office.

H. G. Pollins.
Recorder, General Land Office.

41 147

T2N R14E MD



BLM 64