

RECORD OF SURVEY

BEING THE LANDS ALONG STATE ROUTE 152 AND
OLD GILROY ROAD FROM STATE ROUTE 101 EASTERLY
TO THE SOUTHEASTERLY LINE OF ELIZABETH H. MARTIN
TRACT FILED IN BOOK "F" OF MAPS AT PAGE 31

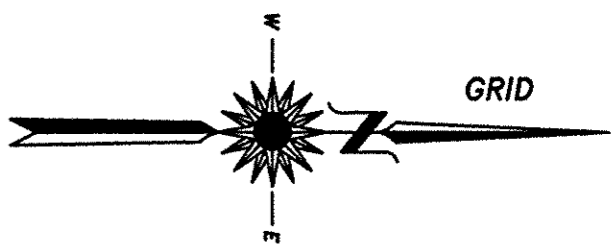
SANTA CLARA COUNTY RECORDS
LYING WITHIN THE CITY OF GILROY

SANTA CLARA COUNTY, CALIFORNIA
SCALE: 1:500 METRIC
SURVEYED 2001 - 2005

CONSISTING OF 6 SHEETS
SHEET 6 OF 6

ELIZABETH H. MARTIN TRACT
"F" M. 31

DETAIL "A"
NOT TO SCALE



- LEGEND**
- ▲ FOUND GPS SURVEY CONTROL POINT
 - △ AS NOTED
 - SET 0.055m BRASS DISK WITH PINCH STAMPED "CALIF. DEPT. OF TRANSPORTATION CS-00X" AS NOTED
 - FOUND MONUMENT AS NOTED
 - SET 0.019m I.P. WITH TAG & TACK STAMPED "LS 4526" UNLESS OTHERWISE NOTED
 - () RECORD INFORMATION
 - (R) RADIAL BEARING
 - (T) TOTAL
 - STATE R/W LINE
 - EXISTING EASEMENT LINE
 - SURVEY CONTROL LINE
 - CITY LIMITS LINE
 - FORMER STATE R/W LINE, PROPERTY LINE

841-18-057
MACHADO
E681 O.R. 232

BOUNDARY NOTE:

FOR BOUNDARY SURVEY SEE RECORD OF SURVEY FILED ON
JANUARY 22, 2003 IN BOOK 757 OF MAPS PAGES 28-37.

NOTES:

SEE SHEET 1 FOR CONTROL SCHEME AND COORDINATE VALUES.
SEE SHEET 5 FOR RECORD REFERENCES.

LINE TABLE

NO.	DIRECTION	LENGTH	RECORD
L1	N 51°48'17" E	2.342m	(9)
L2	N 88°06'46" E	3.849m	(9)
L3	N 88°31'26" E	9.149m	(9)
L4	N 88°08'55" E	5.036m	(9)
L5	N 00°27'38" E	6.674m	(5)

RECORD LINE TABLE

NO.	DIRECTION	LENGTH	RECORD
RL1	(N 51°48'17" E)	(2.342m)	(5)
RL2	(N 88°06'46" E)	(3.849m)	(5)
RL3	(N 87°35' E)	(13.73')	(4)(20)
RL4	(N 87°35' E)	(12.67')	(12)
RL5	(N 87°59'40" E)	(30.02')	(4)(20)
RL6	(N 88°31'26" E)	(9.149m)	(5)

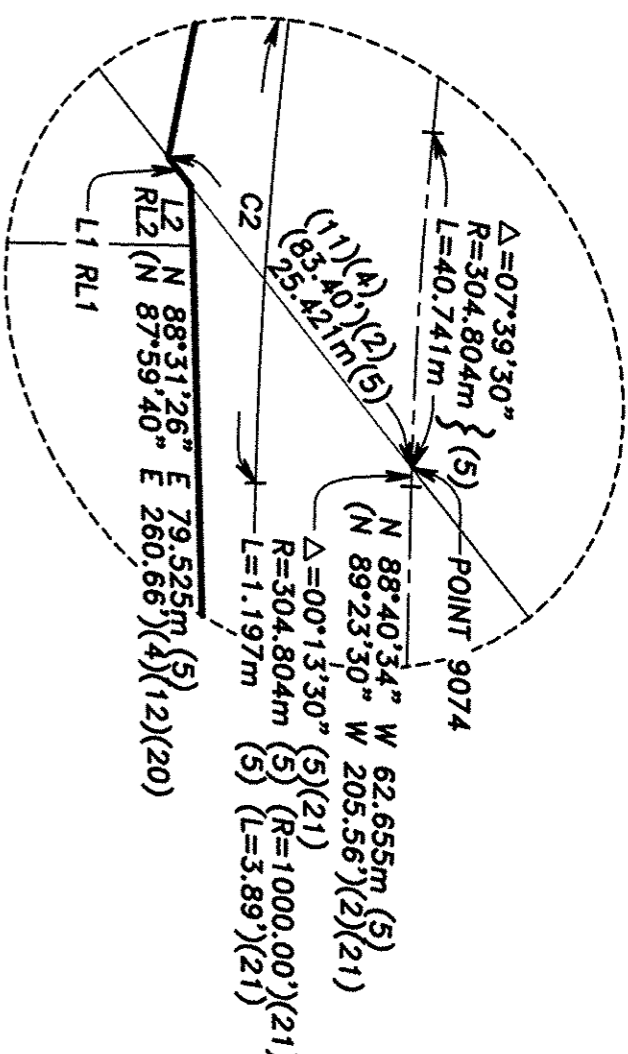
CURVE TABLE

NO.	DELTA	RADIUS	LENGTH
C1	01°27'34"	619.666m	15.785m
C2	07°53'00"	314.862m	43.322m

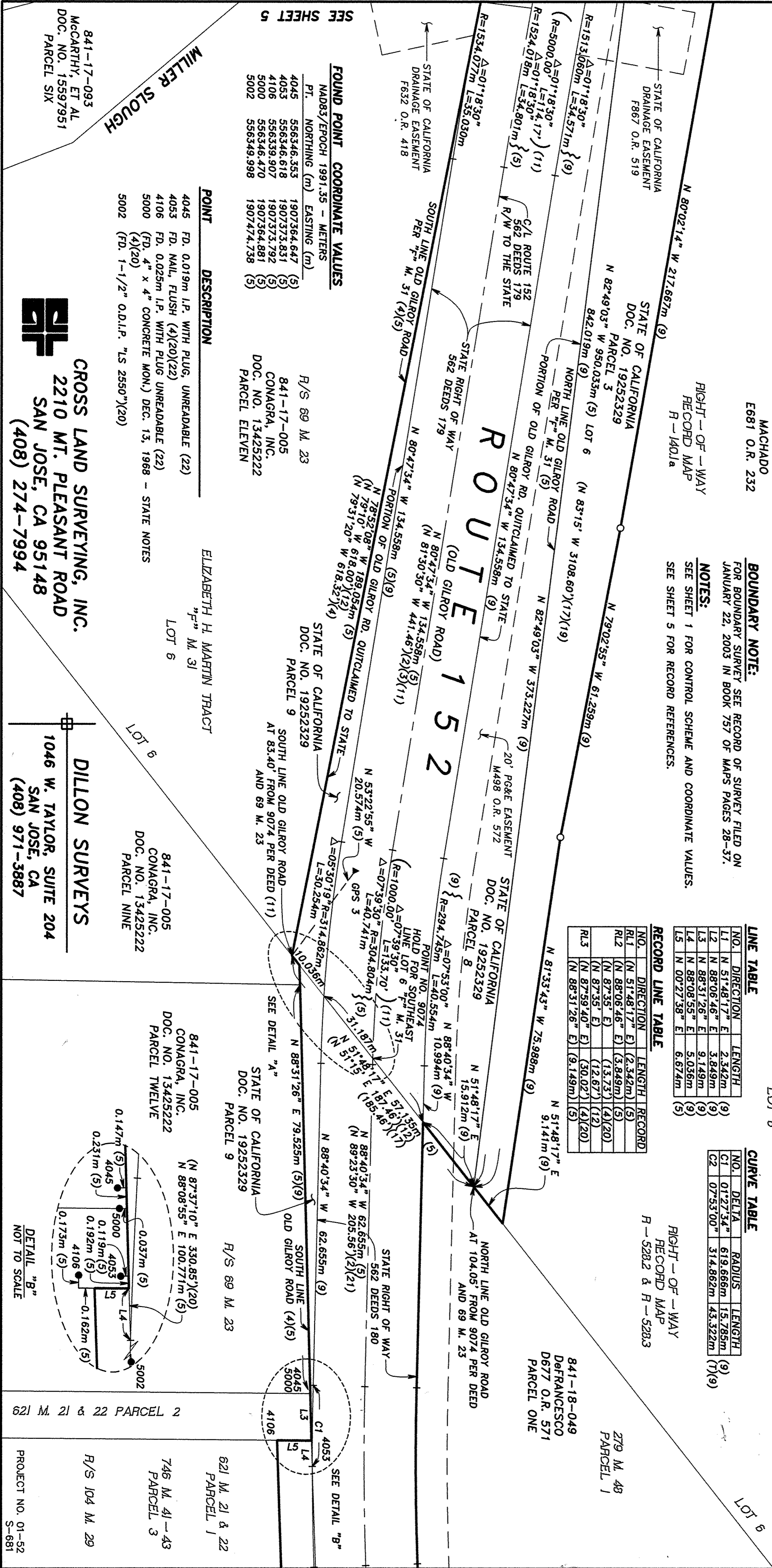
RIGHT - OF - WAY
RECORD MAP
R - 528.2 & R - 528.3

279 M. 48
PARCEL 1

841-18-049
DeFRANCESCO
D677 O.R. 571
PARCEL ONE



LOT 6



FOUND POINT COORDINATE VALUES

PT.	NORTHING (m)	EASTING (m)
4045	556346.563	1907364.647 (5)
4053	556346.618	1907373.831 (5)
4106	556339.907	1907373.792 (5)
5000	556346.470	1907364.881 (5)
5002	556349.998	1907474.738 (5)

POINT DESCRIPTION

POINT	DESCRIPTION
4045	FD. 0.019m I.P. WITH PLUG, UNREADABLE (22)
4053	FD. NAIL, FLUSH (4)(20)(22)
4106	FD. 0.025m I.P. WITH PLUG UNREADABLE (22)
5000	(FD. 4" x 4" CONCRETE MON.) DEC. 13, 1968 - STATE NOTES (4)(20)
5002	(FD. 1-1/2" O.D.I.P. "LS 2550")(20)

ELIZABETH H. MARTIN TRACT
"F" M. 31

LOT 6

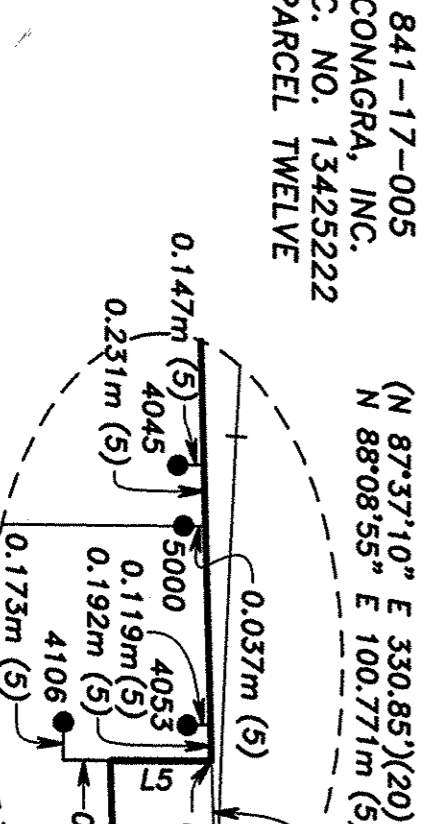
841-17-005
CONAGRA, INC.
DOC. NO. 13425222
PARCEL NINE

DILLON SURVEYS

1046 W. TAYLOR, SUITE 204
SAN JOSE, CA
(408) 971-3887

841-17-093
MCCARTHY, ET AL
DOC. NO. 15597951
PARCEL SIX

CROSS LAND SURVEYING, INC.
2210 MT. PLEASANT ROAD
SAN JOSE, CA 95148
(408) 274-7994



841-17-005
CONAGRA, INC.
DOC. NO. 13425222
PARCEL TWELVE

R/S 104 M. 29

746 M. 41-43
PARCEL 3

621 M. 21 & 22
PARCEL 1

621 M. 21 & 22 PARCEL 2

PROJECT NO. 01-52
S-681