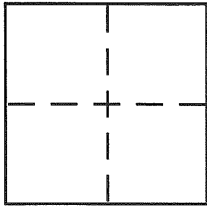


**CORNER RECORD**Document Number CR 1574City of San LeandroCounty of Alameda, CaliforniaBrief Legal Description Western line of Tract 3751, filed 03/23/77, 95M. 3:4**CORNER TYPE**

Government Corner ☐ Control ☐  
 Meander ☐ Property ☒  
 Rancho ☐ Other ☐  
 Date of Survey 09/06/01

**COORDINATES (Optional)**

N. \_\_\_\_\_  
 E. \_\_\_\_\_  
 Zone \_\_\_\_\_ NAD27 ☐ NAD83 ☐  
 NAD83 Epoch \_\_\_\_\_  
 Elev. \_\_\_\_\_  
 Vert. Datum: NGVD29 ☐ NAVD88 ☐  
 Meas. Units: Metric ☐ Imperial ☐

Corner – Left as found ☐ Found and tagged ☒ Established ☐ Reestablished ☐ Rebuilt ☐

Identification and type of corner found: Evidence used to identify or procedure used to establish or reestablish the corner:

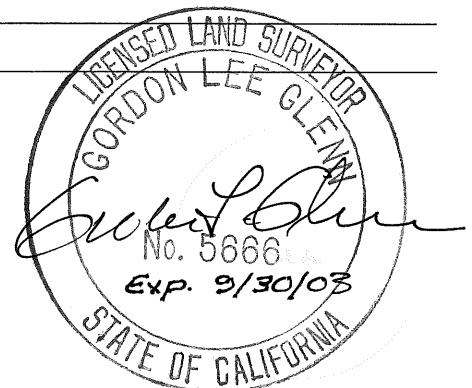
Held record relationship of line surveyed with std. conc. monuments shown found in Chumalia Street as shown on map of Tract 3751. (See Page 2.)

A description of the physical condition of the monument as found and as set or reset: See Legend (Page 2.)

**SURVEYOR'S STATEMENT**

This Corner Record was prepared by me or under my direction in conformance with the Land Surveyor's Act on September 10, 2001.

Signed Gordon Lee Glen P.L.S. or R.C.E. No. 5666

**COUNTY SURVEYOR'S STATEMENT**

This Corner Record was received 10-10-01

and examined and filed 1-10-02

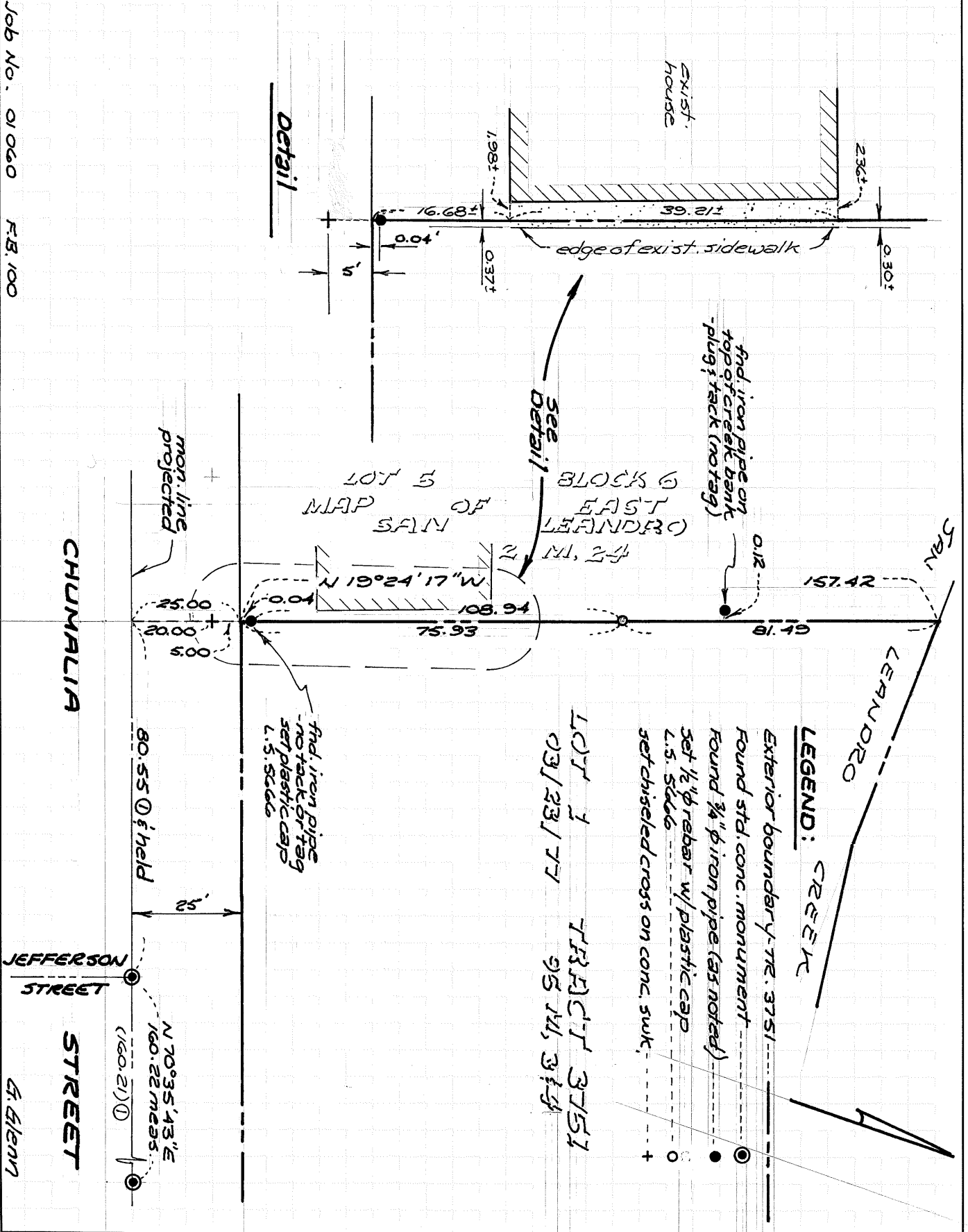
Signed Russell R. Penland P.L.S. or R.C.E. No. 5726

Title COUNTY SURVEYOR

County Surveyor's Comment \_\_\_\_\_



G.M. Job No. 01060 F.B. 100



G. Glenn