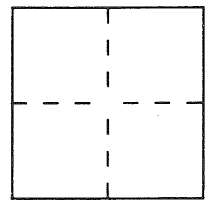


CORNER RECORD

Document Number CR 1898
City of Oakland County of Alameda, California

Brief Legal Description Lot 42, Map of the Re-Subdivision of Block No. 73, Northern Addition Brooklyn, 10 M 45.



CORNER TYPE

COORDINATES (Optional)

Government Corner ☐ Control ☐
Meander ☐ Property ☒
Rancho ☐ Other ☐
Date of Survey 5/21/03

N. _____
E. _____
Zone _____ Datum _____
Elev. _____

Corner — Left as found ☐ Found and tagged ☐ Established ☒ Reestablished ☐ Rebuilt ☐

Identification and type of corner found: Evidence used to identify or procedure used to establish or reestablish the corner:
Used Map of the Re-Subdivision of Block No. 73, Northern Addition Brooklyn to establish property corners. No original monuments set or found.
Used found City of Oakland monuments as shown on plat.

A description of the physical condition of the monument as found and as set or reset: Set monuments as shown on plat

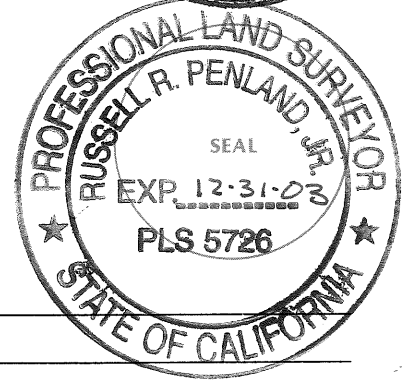
SURVEYOR'S STATEMENT

This Corner Record was prepared by me or under my direction in conformance with the Land Surveyors' Act on 5/23/03.
Signed [Signature] ~~Surveyor~~ R.C.E. Number 24059



COUNTY SURVEYOR'S STATEMENT

This Corner Record was received 5.28.2003 and examined and filed 5-5-2003
Signed [Signature] Title COUNTY SURVEYOR



County Surveyor's Comment _____

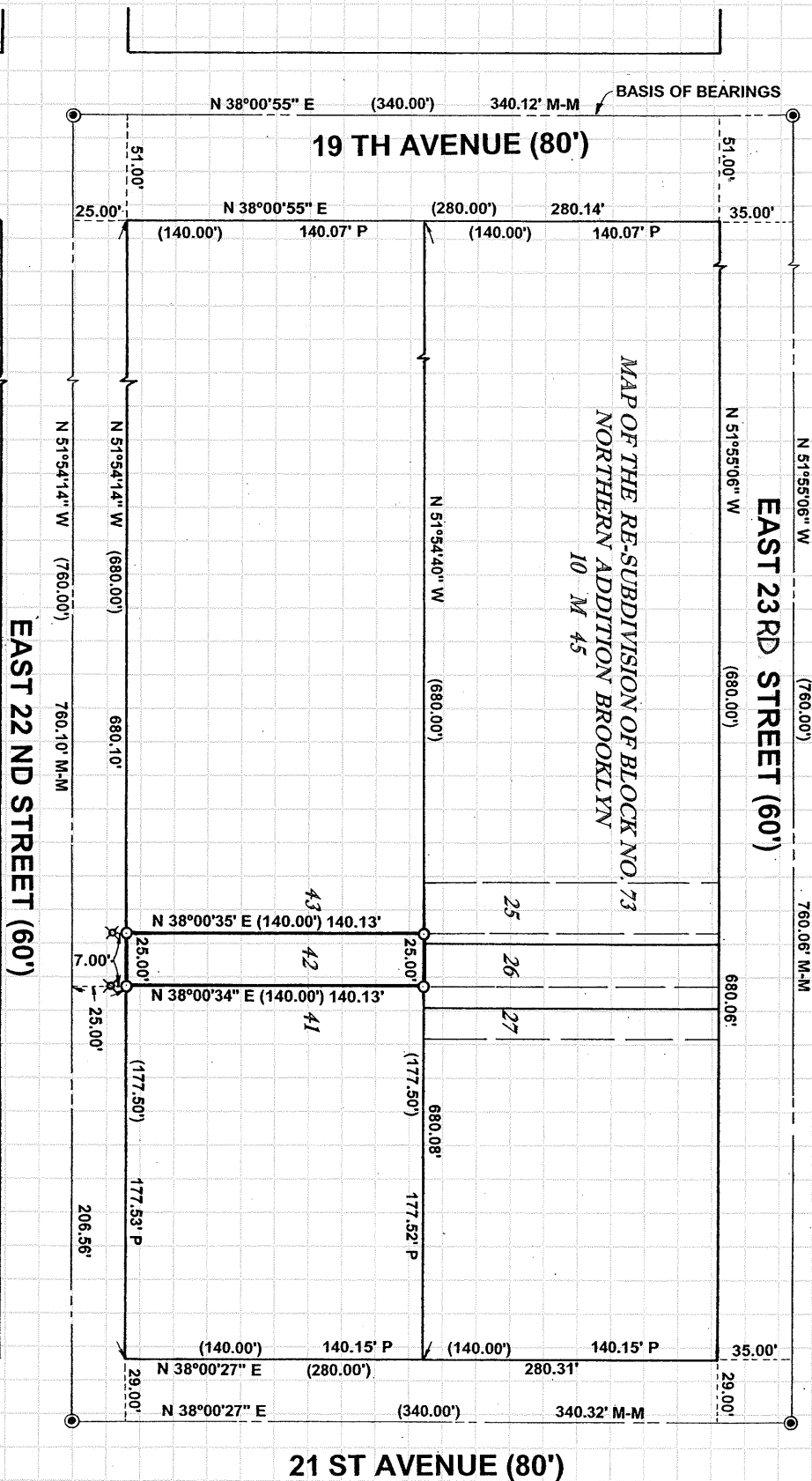


NOTE:
FOR ADDITIONAL DETAILS, SEE 10 M 45.

LEGEND
PROPERTY BOUNDARY LINE.
TIE LINE.

BASES OF BEARINGS:
COORDINATED MONUMENTS ALONG 19 TH AVENUE BETWEEN E. 24 TH AND E. 25 TH STREETS, AS SHOWN ON CITY OF OAKLAND'S MONUMENT MAP REFERENCE NO. 14978474, COMPUTED AS N 38°00'55" E.

● FOUND STANDARD CITY MONUMENT.
○ SET 1" IRON PIPE WITH BRASS TAG, RCE 24059, SET IN CONCRETE.
X SET NAIL AND BRASS TAG, RCE 24059, IN HOLE DRILLED IN CONCRETE.
() DENOTES RECORD DATA PER 10 M 45 IN DISCREPANCY WITH FIELD.
P PROPORTIONED VALUE.



APN: 022-0297-012