

# HOWTO unbrick AINOL NOVO10 HERO (Dualcore) (ver 0.4RC by zelenij & NiKoLa\_N)

Thanks very much for brainstorming session ☺  
**NiKoLa\_N, Schlosss, solsan, neDtheDeeJay**  
**shurikk1977, cem4ik, Zguj, FerZ\_174**

And also to all sympathetic. If we forgot someone - write, we add. ☺

**In this howto something may be missed, so be careful and attentive!**

**Before you do anything, read it!**

**The execution of this instruction requires certain skills, and not necessarily that it will lead to the “unbricking” of your device!**

**Whatever you do, you do at your own risk, and the authors accept any responsibility for the fact that you have something go wrong and you mess up your device!**

**Before all the manipulations you should make sure that the battery of your device is FULL charged!**

**For greater certainty, all operations with the tablet PC (other than those described in paragraph 4) can be performed with the connected charger.**

Here we go! ;)

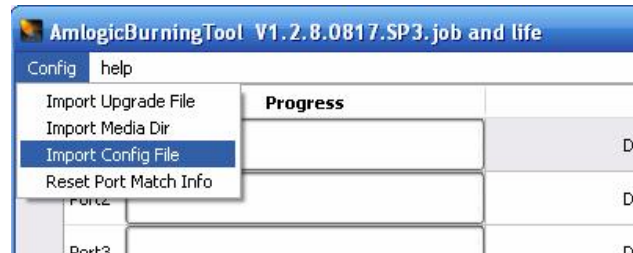
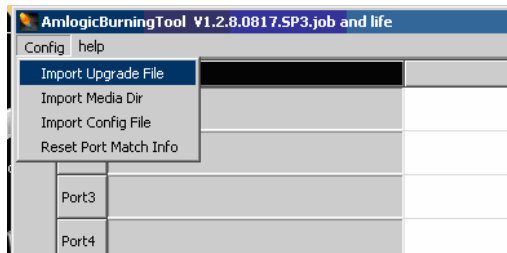
1. Take SD card. Format it in FAT32. Do not put the card in Tablet PC!
2. Download files from <http://goo.gl/pVI98>
3. Unpack all files to C: **(The path is very important)**  
You must take C:\Android
4. Put tablet in flash recovery mode:
  - Start «Device manager» on your desktop.
  - connect the tablet pc to your desktop, put the needle into microphone hole, then press **VOL+ & POWER**. The new device M6CHIP (M3CHIP) must be found in device manager. If nothing happens, try again. If not helpful you need to disassemble tablet pc. Power off the tablet pc (put the needle into microphone hole), very carefully disassemble the tablet pc (You can see the pictures here <http://goo.gl/GWGdl>). Connect the tablet pc to your desktop with USB cable. Then: there is a chip on the right of the CPU (with logo MICRON (M)). On the up-right side of the chip you must short 5 and 6 contact (you can do it with needle) then press the PWR button for 3-5 seconds, remove the short from the contacts of chip. The new device M6CHIP (M3CHIP) must be found in device manager.



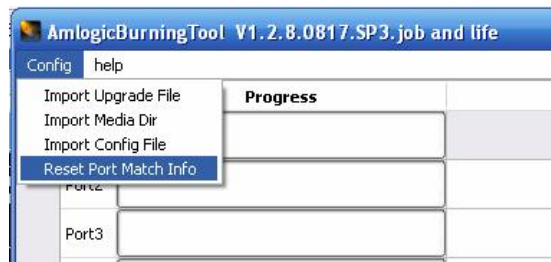
- In “Device manager” you must install driver for the new device from the folder C:\Android\drivers\aml\_flash  
You will see “WorldCup device”
- Disconnect the tablet pc from desktop.

## 5. Working with AMLogicBurningTool

- disconnect the tablet pc from desktop
- run the program `C:\Android\AMLflash\ImageBurnTool.exe`
- in the program import the firmware file: `C:\Android\firmware\1115\Novo1003-Hero-1115.zip`, wait some time. You will see the message "There is no config file...". Import config file from:  
`C:\Android\AMLflash\resource\config_progress.xml`



- Connect the tablet pc to the desktop via USB.
- Power on the tablet PC. Press "START" in AMLogicBurningTool
- You will see the progress bar. In some cases on 2-4% you can see the message "disconnect the tablet and reset port". In this case you must:
  - Just unplug the **USB from your desktop**.  
**DO NOT POWER OFF THE TABLET PC! DO NOT RESET THE TABLET PC !!!**
  - Press **OK**.
  - Press **Stop**
  - Press **Config – Reset Port Match Info**



- Connect the USB to the desktop, press **Start** in AMLogicBurningTool.
- When the next lines will be executed (you can see it in the log), the screen backlight will turn on.  

```
[T 0][19:04:27]: command exec:video dev bl_on
```

```
[T 0][19:04:29]: command exec:video dev enable
```
- Progress bar will reach about 80%, then you will see the error. It is normal.
- After some time (from 30 sec up to 2 min) you will see **TWRP recovery** menu on your tablet pc display
- Now You can close the AMLogicBurningTool.

### The example of the normal LOG of AMLogicBurningTool:

```
[T 0][12:35:40]: load spl ...
[T 0][12:35:40]: Transfer Complete! total size is 18472 Bytes
[T 0][12:35:57]: load spl ...
[T 0][12:35:59]: load uboot ...
[T 0][12:35:59]: Transfer Complete! total size is 501968 Bytes
[T 0][12:36:05]: test command exec: crc 0x8f800000 501968 e52532ff
[T 0][12:36:05]: command exec: crc 0x8f800000 501968 e52532ff
[T 0][12:36:05]: sendCommandWithReply: crc 0x8f800000 501968 e52532ff maxCount:30
[T 0][12:36:06]: begin run 8f800000
[T 0][12:36:09]: finish run 8f800000
[T 0][12:36:11]: command exec:set_chgcure 0
[T 0][12:36:12]: command exec:video dev bl_on
[T 0][12:36:13]: command exec:video dev enable
[T 0][12:36:15]: command exec:sf probe 2
[T 0][12:36:16]: command exec:sf erase 0 100000
[T 0][12:36:17]: command exec:nand erase 4000000
[T 0][12:36:24]: command exec:defenv
[T 0][12:36:25]: command exec:setenv bootargs ${bootargs} a9_clk_max=600000000
[T 0][12:36:26]: load command: setenv recovery_command --usb_burning
[T 0][12:36:27]: command exec:cmd_in_mem 0x82000000
[T 0][12:36:28]: command exec:save
[T 0][12:36:29]: load uimage ...
[T 0][12:36:29]: Transfer Complete! total size is 5177344 Bytes
[T 0][12:36:36]: command exec:bootm 0x82000000
[T 0][12:36:38]: boot ulmage ...
[T 0][12:37:14]: cannot find disk!
[T 0][12:37:15]: failed because no connected device ,current step is 17
```

## The following describes the Possible problems when working with the program AMLogicBurningTool and their solutions:

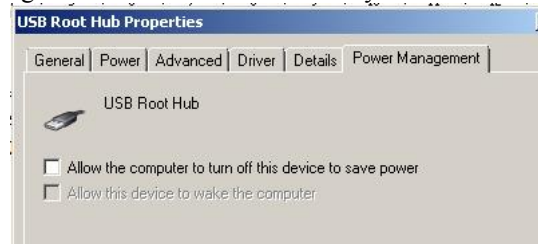
In some cases your system will unable to use WorldCup Device. And you will see the messages in log window:

```
-----call System Rescan---  
-----call System Rescan finished---  
mThreadOrder: 1 load spl ...  
thread 1 handle null  
before loadSpl, identify is -1  
mThreadOrder: 1 load spl ...  
...  
...  
thread 1 handle null  
before loadSpl, identify is -1  
1 exit
```

To fix that problem the system language on your desktop must be set to **ENGLISH**

If the process stops on “**load uboot**” :

- you must power off the (put the needle into microphone hole)
- disconnect the tablet pc USB cable from the desktop.
- In the Device manager for each device “USB Hub” you must uncheck “Power option”



- Then, connect the tablet pc to your desktop via **USB to another USB port**
- Power on the tablet pc, install again **WorldCup Device driver if needed.**
- Press **Start** in **AMLogicBurningTool**.

6. After starting the recovery you will see the new device in device manager.  
- **YOU MUST MANUALLY INSTALL THE DRIVER "Samsung Android Interface"** for this device from the folder **C:\Android\drivers\ADB**  
- After the driver installing, you will see in device manager the new device **Samsung Android Interface**, and also you can see the two new removable drives. **Do not format these drives.**  
In some cases the driver name can be **Samsung Google Nexus ADB**.

7. Open the folder **C:\Android\adb**

8. Start the file **TEST\_adb\_hero.bat**

If You will see the info:

```
C:\Android\adb>adb devices
List of devices attached
0123456789ABCDEF    recovery

C:\Android\adb>pause
Press any key to continue . . .
```

Just press any key, all OK.

*If under the phrase «**List of devices attached**» you see only «**pause**», this means that the PC is not connected to cable, or you did something wrong. In the last case, look for an error, and repeat all from the beginning ☹.*

9. **Now insert** the microSD card into the tablet pc.

10. Start the file **C:\Android\adb\heroflash.bat**

You will see the copy and flashing process.

11. After the process stops, you must **power off** the tablet pc **from TWRP recovery** menu.

12. Disconnect the USB cable. **Do not remove** SD card from tablet PC.

13. Press PWR button on the tablet pc.

After the some time (up to 2 minutes) the “stock” **recovery <3e>** will start

14. You must do factory reset, wipe cache, wipe media.

15. Select **install from EXT**

You will see **firmware zip** archives. At first install **firmware 1115** , then **Gapps**

16. After the firmware installs, press **restart** in recovery menu.

**17. PROFIT!**

**To explain more detail of these procedures, we do not see any sense, because if the user does not understand these instructions, THEN DO NOT TRY!!!**

**The risk of killing the hardware is very BIG!**

**Prooflinks:**

Thread on 4pda: <http://4pda.ru/forum/index.php?showtopic=408463&view=getlastpost>

AmlBoorningTool: [http://www.lokumrom.com/index.php/Using\\_AML\\_Flash](http://www.lokumrom.com/index.php/Using_AML_Flash)

ADB: <http://developer.android.com/tools/help/adb.html>

Android SDK: <http://developer.android.com/sdk/index.html#download>

TWRP Recovery (port by Christian Troy): <http://www.slatedroid.com/topic/41030-recovery-twrp-v2330/>

Original firmware 1115v2:

<http://ainol.com/plugin.php?identifier=ainol&module=download&action=info&downloadid=118>