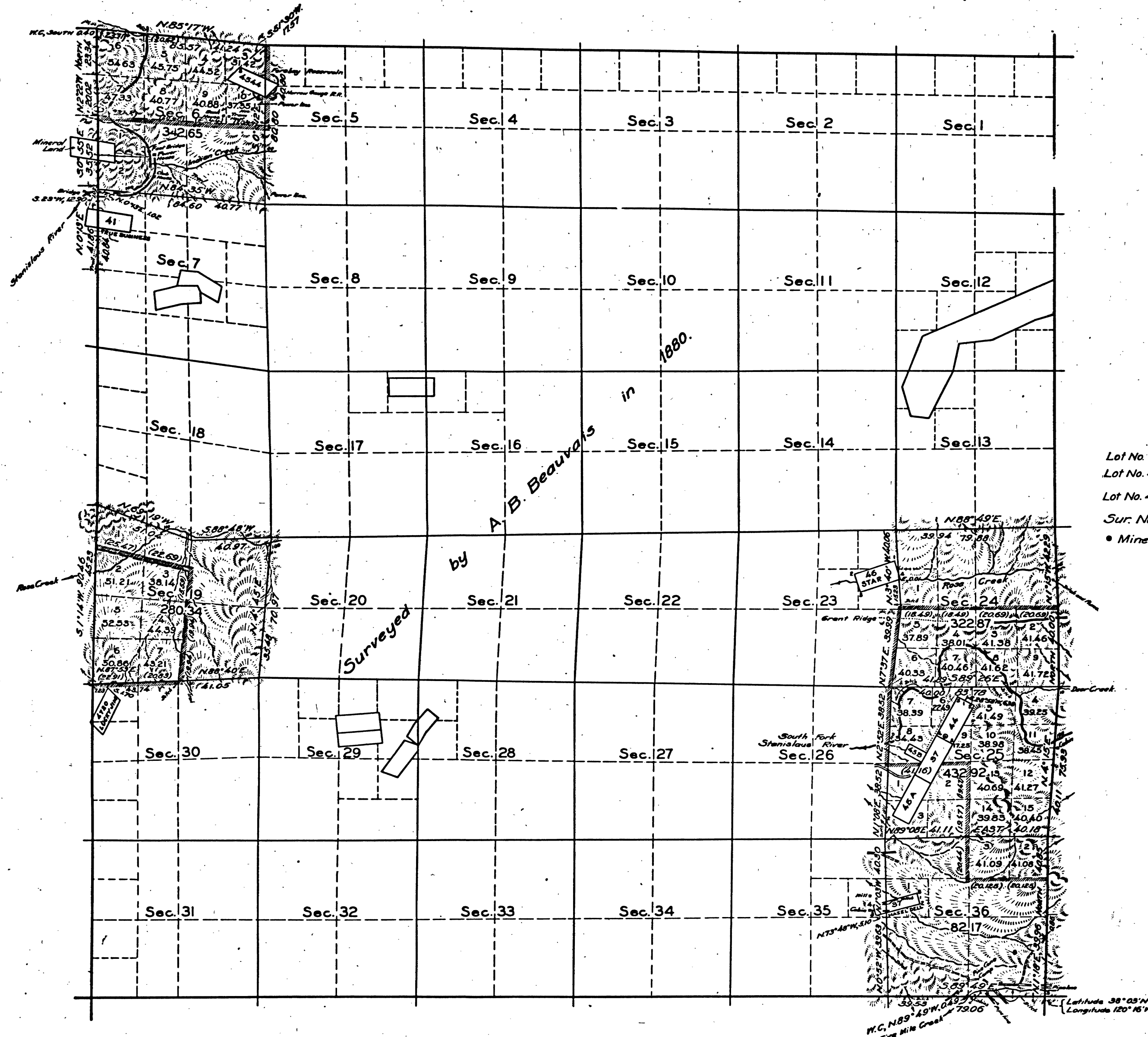


TOWNSHIP N° 3 NORTH, RANGE N° 15 EAST, MOUNT DIABLO MERIDIAN, CALIFORNIA.



Mineral Claims.
 Lot No. 37 Keltz Quartz Mine.
 Lot No. 44 North Extension of the Keltz Quartz Mine.
 Lot No. 45B Kelvin Mill Site.
 Sur. No. 4544 Amazon Quartz Mining Claim.
 • Mineral Monument, Tuolumne Mining District.

Mean Magnetic Declination,

Scale: 40 Chains to an Inch.

Area Surveyed, 1460.95 Acres.

LINES DESIGNATED	BY WHOM SURVEYED	NO	GROUP DATE	MILEAGE		WHEN SURVEYED	
				MLS.	CHS.	BEGUN	COMPLETED
Exterior	Dupree R. Averill,	118	May 5, 1923.	5	45.52	May 17, 1926	June 1, 1926.
Subdivisional	U.S. Surveyor, and	"		11	15.14	May 18, 1926	June 1, 1926.
Meander	Roger F. Wilson	"					
Miscellaneous	U.S. Transitman.	"		0	30.76	May 18, 1926	June 1, 1926.

Office of U.S. Supervisor of Surveys

Denver, Colorado, March 12, 1928.

The above plat of Township No. 3 North, Range No. 15 East, of the Mount Diablo Meridian, California, is strictly conformable to the field notes of the survey thereof which have been examined and approved.

41 264

Thos. C. Howell
 U.S. Supervisor of Surveys.

DEPARTMENT OF THE INTERIOR
GENERAL LAND OFFICE

Washington, D.C., March 30, 1928.

The survey represented by this plat having been correctly executed in accordance with the requirements of law and the regulations of this office, is hereby accepted.

Thos. C. Howell
 Assistant Commissioner

6

T3N R15E MD