

1. FEED THROUGH LIGHTING CONTACTOR, REF: 11/E-400.
2. STUB UP LOCATION FOR (3) 3/4" CONDUITS & PULL STRINGS, TO ENTER BUILDING & UP TO 6" ABOVE CEILING. REFER TO SHEET 1/E-401.
3. STUB-UP LOCATION FOR MENU BOARD. SIGN DISCONNECT PROVIDED BY SIGN CONTRACTOR. COORDINATE PRECISE LOCATION WITH ARCHITECT / OWNER.
4. DRIVE-THRU SENSOR LOOP. COORDINATE LOCATION. REFER TO DETAIL 1/E-401.
5. STUB-UP FOR DRIVE-THRU ORDER CONFIRMATION MONITOR. COORDINATE LOCATION WITH ARCHITECT / OWNER.
6. STUB UP LOCATION FOR PYLON SIGN. ELECTRICAL CONTRACTOR TO PROVIDE DISCONNECT AT BASE OF SIGN. COORDINATE EXACT LOCATION WITH ARCHITECT/OWNER. CONNECT TO EXTERIOR BUILDING SIGN TIMER CONTROL. REFERENCE DETAIL 11/E-400.
7. SEE POLE MOUNTING DETAIL. REFER TO DETAIL 4/E-105.
8. CABLE PULL BOX. REFER TO DETAIL 1/E-100. INSTALL MINIMUM 3' FROM SIDEWALK. DO NOT INSTALL IN SIDEWALK CONCRETE.

- COORDINATE SERVICE ENTRANCE EQUIPMENT, UTILITY TRANSFORMER, PRIMARY SERVICE, SECONDARY SERVICE, AND POWER POLE LOCATIONS WITH SERVING UTILITY COMPANY AND COMPLY AS REQUIRED.
- CONTRACTOR TO BE RESPONSIBLE FOR COORDINATING AND PROVIDING REQUIRED WORK FOR SUPPLYING ELECTRICAL POWER AND TELEPHONE UTILITIES TO THE BUILDING.
- CONTRACTOR SHALL HAVE ALL EXISTING UNDERGROUND UTILITIES LOCATED PRIOR TO TRENCHING. ALL UNDERGROUND UTILITIES DAMAGED DURING TRENCHING SHALL BE REPAIRED TO THE SATISFACTION OF THE INVOLVED UTILITY AT THE CONTRACTOR'S EXPENSE.
- MINIMUM CONDUCTOR SIZE ON THIS SHEET SHALL BE #10 CU, 1" CONDUIT.

SITE PLAN KEYED NOTES

3

E-105

SITE PLAN GENERAL NOTES

2

E-105

149W L.E.D. FIXTURE WITH CUTOFF DISTRIBUTION.

20" HIGH, 4" SQUARE STRAIGHT STEEL POLE MOUNTING/DRILLING PER FIXTURE DESCRIPTION. FINISH TO MATCH FIXTURE.

HANDHOLE

GROUND LUG

BASE COVER

BASE PLATE

1" CHAMFER OR RADIUS

EXPOSED PIER. FINISH PER ARCHITECTURAL PLANS.

FINISHED GRADE

UTILIZE LINED SONO TUBES FOR SMOOTH FINISH.

SCHEDULE 40 PVC IN EARTH. (MINIMUM DEPTH PER LOCAL CODE)

CONCRETE CAISSON TYPE FOOTING. REFER TO STRUCTURAL DRAWINGS FOR DETAILS.

DRYPACK BASE PLATE AFTER POLE IS LEVELED.

ANCHOR BOLT (TIED TO STRUCTURAL REBAR CAGE) WITH NUT ABOVE AND BELOW BASE PLATE.

PROVIDE 20' OF BARE #4 CU WIRE COILED IN BOTTOM OF LIGHT POLE CAISSON (2" UP FROM BOTTOM). CONNECT TO GROUND LUG AT HAND HOLE.

"REFER TO LIGHT POLE SCHEDULE".

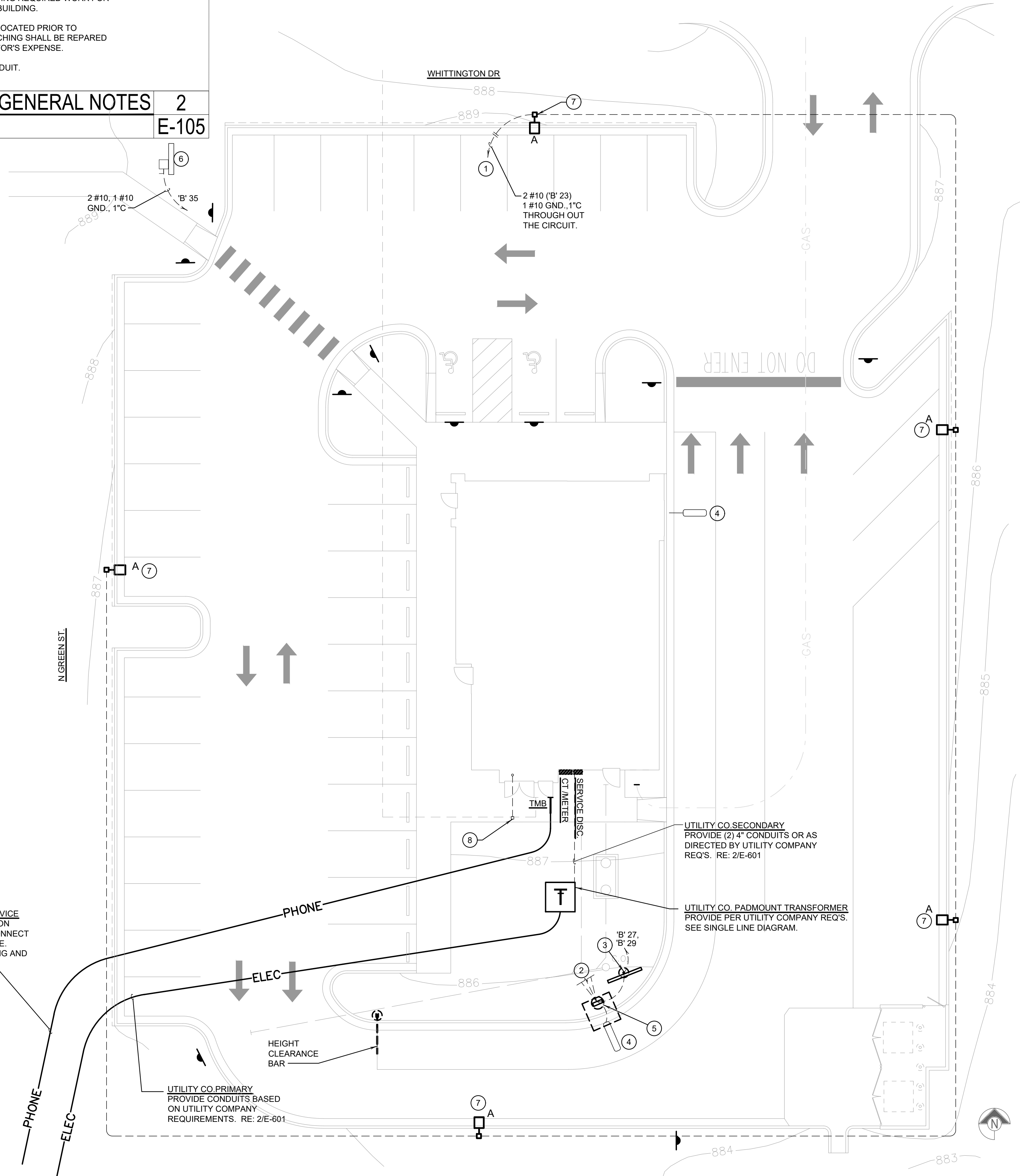
NOTE: THIS DETAIL IS FOR ELECTRICAL INSTALLATION ONLY. REFER TO STRUCTURAL DRAWINGS FOR MORE INFORMATION.

POLE MOUNTING DETAILS

4

E-106

NO SCALE



SITE & EXTERIOR LIGHTING PLAN

1

E-105

1" = 16'-0"



PANDA EXPRESS, INC.
1683 Walnut Grove Ave.
Rosemead, California
91770

Telephone: 626.799.9898
Facsimile: 626.372.8288

All ideas, designs, arrangement and plans indicated or represented by this drawing are the property of Panda Express Inc. and were created for use on this specific project. None of these ideas, designs, arrangements or plans may be used by or disclosed to any person, firm, or corporation without the written permission of Panda Express Inc.

REVISIONS:

NO.	DESCRIPTION	DATE

ISSUE DATE:

STATE PERMIT SET	02/10/2021

DRAWN BY: N. NGUYEN

PANDA PROJECT #: D8059

ARCH PROJECT #: JCDT20-0255



NORR
ARCHITECTS ENGINEERS PLANNERS

PANDA EXPRESS

TRUE WARM & WELCOME
1395 N. GREEN STREET
BROWNSBURG, IN 46112

E-105

SITE & EXTERIOR LIGHTING PLAN

TRUE WARM & WELCOME 2300 R4