

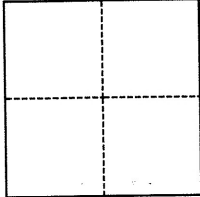
CORNER RECORD

Agency Index BK 115 PG 68
Document Number CR-11560

City of Unincorporated County of Alameda, California
Brief Legal Description Monument bolts as shown on TR 7530, 349 M 14-19.

CORNER TYPE

COORDINATES (Optional)



☐ Government Corner ☒ Control
☐ Meander ☐ Property
☐ Rancho ☐ Other

Date of Survey May 19, 2018

N. _____ E. _____

Elevation _____

Units ☐ Metric ☒ U.S. Survey Foot

Horizontal Datum _____

Zone _____ Epoch Date _____

Vertical Datum _____

☐ Complies with Public Resources Code §§8801-8819

☐ Complies with Public Resources Code §§8890-8902

PLS Act Ref.: ☐ 8765(d) ☒ 8771 ☐ 8773 ☐ Other:

Corner/
Monument: ☒ Left as found ☐ Established ☐ Rebuilt ☒ Pre-Construction
☐ Found and tagged ☐ Reestablished ☒ Referenced ☐ Post-Construction

Narrative of corner identified and monument as found, set, reset, replaced, or removed:

☒ See sheet #2 for description(s):

Monument bolts as shown on Tract Map 7530, 349 M 14-19, County Surveyors ID numbers SX88G2 and UZ12J4.

Referenced as shown on page 2.

SURVEYOR'S STATEMENT

This Corner Record was prepared by me or under my direction in conformance with

the Professional Land Surveyors' Act on May 22, 2018

Signed [Signature] P.L.S. or R.C.E. No. 7905



COUNTY SURVEYOR'S STATEMENT

This Corner Record was received 7 JUNE 2018

and examined and filed 16 NOVEMBER 2018

Signed Michael Rubner P.L.S. or R.C.E. No. 6843

Title COUNTY SURVEYOR

County Surveyor's Comment



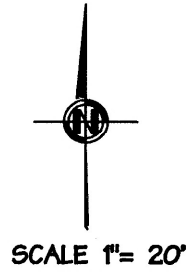
SEE CR 11559

REFERENCES:

TRACT 7530 - BK 349 MAPS 14-19
RECORD OF SURVEY 857 - 13 RS 93
RECORD OF SURVEY 360 - 7 RS 30

CROW CANYON PLACE

APN 84C-1067-10

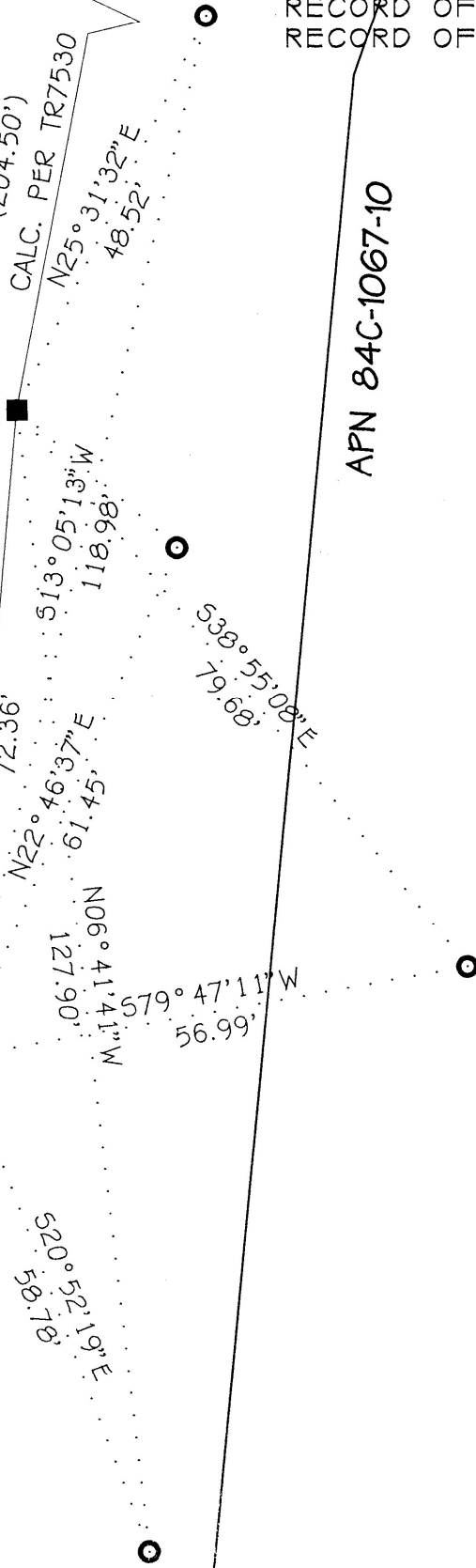


BASIS OF BEARINGS
N10° 40' 40" E
204.50'
(204.50')
CALC. PER TR7530

UZ12J4

(N4° 49' 09" E 72.41')
PER TR7530
N04° 46' 55" E

5X88G2



LEGEND:

FOUND SQUARE BOLT WITH CUT CROSS ■
SET STAINLESS STEEL TAG L.S. 7905 ○
RECORD DIMENSION ()