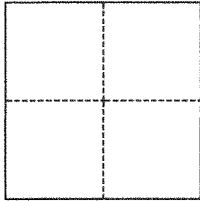


CORNER RECORD

140 39
Agency Index BK 140 pg 39Document Number CR 14790City of OAKLAND County of ALAMEDA, CaliforniaBrief Legal Description MONUMENT AT INTERSECTION OF 82ND AVE & D ST**CORNER TYPE****COORDINATES (Optional)**

- ☐ Government Corner ☒ Control
☐ Meander ☐ Property
☐ Rancho ☐ Other

Date of Survey September 4, 2020

N. _____ E. _____

Elevation _____

Units ☐ Metric ☒ U.S. Survey Foot

Horizontal Datum _____

Zone _____ Epoch Date _____

Vertical Datum _____

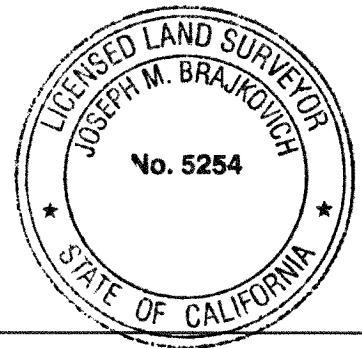
☐ Complies with Public Resources Code §§8801-8819☐ Complies with Public Resources Code §§8890-8902PLS Act Ref.: ☐ 8765(d) ☒ 8771 ☐ 8773 ☐ Other:

Corner/
Monument: ☒ Left as found ☐ Established ☐ Rebuilt ☒ Pre-Construction
☐ Found and tagged ☐ Reestablished ☒ Referenced ☐ Post-Construction

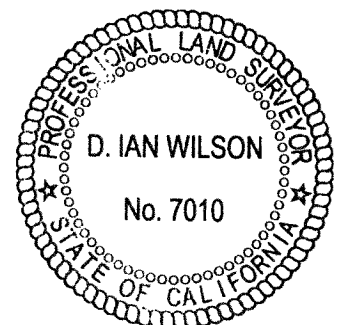
Narrative of corner identified and monument as found, set, reset, replaced, or removed:

☒ See sheet #2 for description(s):**SURVEYOR'S STATEMENT**

This Corner Record was prepared by me or under my direction in conformance with

the Professional Land Surveyors' Act on January 29, 2021Signed Joseph M. Brajkovich P.L.S. or R.C.E. No. 5254**COUNTY SURVEYOR'S STATEMENT**This Corner Record was received AUGUST 14, 2021and examined and filed AUGUST 17, 2021Signed D. Ian Wilson P.L.S. or R.C.E. No. 7010Title ALAMEDA COUNTY SURVEYOR

County Surveyor's Comment



LEGEND

AA##A#

ALAMEDA COUNTY MONUMENT ID

#####

STREET ADDRESS

APN

ASSESSOR'S PARCEL NUMBER

X

CUT CROSS

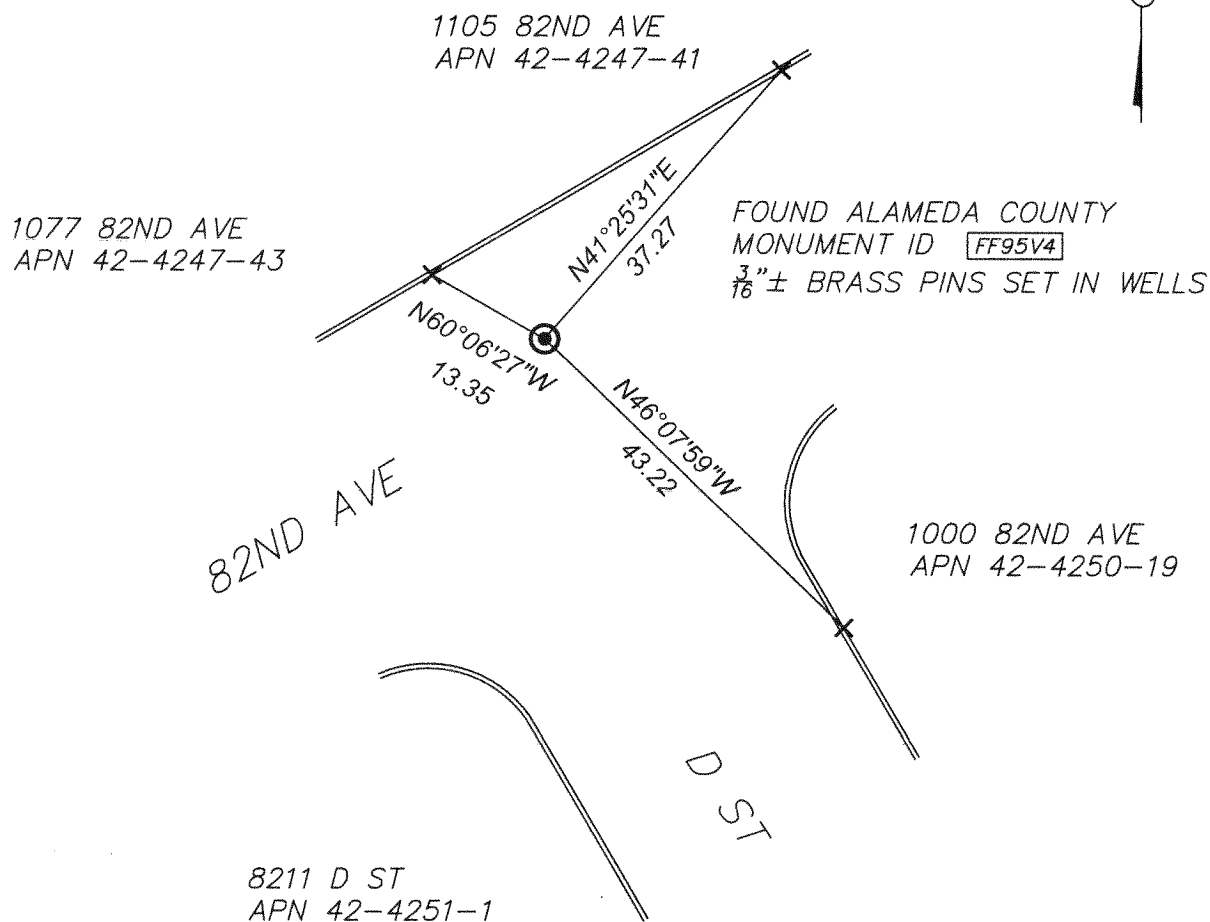
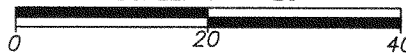
○

SET NAIL/WASHER

⊙

SURVEY MONUMENT

SCALE: 1" = 20'



20010