

PROVIDE AT METALLIC SIGN OVER EACH STOREFRONT DOOR STATING: "THIS DOOR MUST BE KEPT UNLOCKED DURING BUSINESS HOURS." LETTERS SHALL NOT BE LESS THAN 1" HIGH ON A CONTRASTING BACKGROUND. THE SIGN SHALL BE INSTALLED BY THE GENERAL CONTRACTOR ON THE STOREFRONT ALUMINUM HEADER FRAME.

18. ALL NEW PRIMARY ENTRANCES TO THE BUILDINGS AND FACILITIES SHALL BE MADE ACCESSIBLE TO THE PHYSICALLY DISABLED.

19. ACCESSIBLE ENTRANCES SHALL BE IDENTIFIED WITH AT LEAST ONE STANDARD SIGN AND WITH ADDITIONAL DIRECTIONAL SIGNS, AS REQUIRED, VISIBLE FROM APPROACHING FOOTSTRAKEWAYS. GENERAL CONTRACTOR SHALL PROVIDE STANDARD SIGNAGE. CALIFORNIA REQUIRES ISA (INTERNATIONAL SYMBOL OF ACCESSIBILITY) AT ALL ACCESSIBLE ENTRANCES.

20. EVERY REQUIRED ENTRANCE OR PASSAGE DOORWAY SHALL BE OF A SIZE AS TO PERMIT THE INSTALLATION OF A DOOR NOT LESS THAN 36 INCHES IN WIDTH AND NOT LESS THAN 6 FEET - 8 INCHES IN HEIGHT. DOORS SHALL BE CAPABLE OF OPENING AT LEAST 90 DEGREES AND SHALL BE SO MOUNTED THAT THE CLEAR WIDTH OF DOORWAY IS NOT LESS THAN 32-INCHES

21. WHERE PAIR OF DOORS IS UTILIZED AT LEAST ONE OF THE DOORS SHALL PROVIDE A CLEAR UNOBSTRUCTED OPENING WIDTH OF 32-INCHES WITH THE LEAF POSITIONED AT AN ANGLE OF 90 DEGREES FROM ITS CLOSED POSITION.

22. LATCHING AND LOCKING DEVICES THAT ARE HAND ACTIVATED AND WHICH ARE IN PATH OF TRAVEL SHALL BE OPERABLE WITH A SINGLE EFFORT BY VERIST TYPE HARDWARE, THAT DOES NOT REQUIRE TIGHT GRASPING, PINCHING OR TWISTING OF WRIST TO OPERATE. PANIC BARS, PUSH-PULL ACTIVATING BARS, OR OTHER HARDWARE DESIGNED TO PROVIDE PASSAGE WITHOUT REQUIRING THE ABILITY TO GRASP THE OPENING HARDWARE. REFER TO SECTION 04.27 OF IBC

23. HAND ACTIVATED DOOR OPENING HARDWARE SHALL BE CENTERED BETWEEN 34-INCHES MINIMUM AND 48" ABOVE THE FLOOR. (34-INCHES TO 44-INCHES FOR CALIFORNIA ONLY)

24. THE FLOOR AND LANDING ON EACH SIDE OF AN ENTRANCE OR PASSAGE DOOR SHALL BE LEVEL, CLEAR, LEVEL, THE LEVEL AND CLEAR AREA SHALL HAVE A LENGTH OF 40-INCHES TO THE WIDTH OF "TRAVEL" AND THE LENGTH OF 48-INCHES IN OPPOSITE DIRECTION OF TRAVEL. SEE DIAGRAM "MANEUVERING CLEARANCE"

25. THE WIDTH OF THE LEVEL AND CLEAR AREA ON THE SIDE TO WHICH THE DOOR SWINGS SHALL EXTEND 24-INCHES PAST THE STRIKE EDGE OF THE DOOR FOR EXTERIOR DOORS AND 18-INCHES PAST THE STRIKE EDGE FOR THE INTERIOR DOORS.

26. THE FLOOR OR LANDING SHALL BE NOT MORE THAN $\frac{1}{4}$ " LOWER THAN THE THRESHOLD OF THE DOORWAY. CHANGE IN LEVEL BETWEEN $\frac{1}{4}$ " AND $\frac{1}{2}$ " SHALL BE BEVELED WITH A SLOPE NO GREATER THAN 1:2

27. THE BOTTOM 10" OF ALL DOORS EXCEPT AUTOMATIC AND SLIDING DOORS SHALL HAVE A SMOOTH UNINTERRUPTED SURFACE TO ALLOW THE DOOR TO BE OPENED BY A WHEELCHAIR FOOTREST WITHOUT CREATING A TRIP OR HAZARDOUS CONDITION. WHERE AN ALTERNATE SURFACE IS USED, A 10" HIGH SMOOTH PANEL SHALL BE INSTALLED ON THE PUSHED SIDE OF THE DOOR, WHICH WILL ALLOW THE DOOR TO BE OPENED BY A WHEELCHAIR FOOTREST WITHOUT CREATING A TRAP OR HAZARDOUS CONDITION.

28. A NARROW FRAME WITH A BEVELED TOP (30 DEGREES MAX. BEVEL TO VERTICAL PLANE) INSTALLED AT THE BOTTOM OF THE GLASS DOOR (WITH NO SIDE FRAMES) MAY BE USED IN LIEU OF PROVIDING THE REQUIRED 10" UNINTERRUPTED SURFACE AT THE BOTTOM OF THE DOOR.

29. MAXIMUM EFFORT TO OPERATE DOORS SHALL NOT EXCEED 5 LBS. FOR EXTERIOR DOORS AND 5 LBS. FOR INTERIOR DOORS. SUCH PULL OR PUSH EFFORT BEING APPLIED AT RIGHT ANGLES TO HINGED DOORS AND AT THE CENTER PLANE OF SLIDING OR FOLDING DOORS. COMPENSATING DEVICES OR AUTOMATIC DOOR OPERATORS MAY BE UTILIZED TO MEET THE ABOVE STANDARDS, WHEN FIRE DOORS ARE REQUIRED. THE MAXIMUM EFFORT TO OPERATE THE DOOR MAY BE INCREASED NOT EXCEED 15 LBS.

CORRIDORS AND AISLE:

30. FLOOR SURFACES SHALL BE SLIP-RESISTANT

31. EVERY PORTION OF EVERY BUILDING IN WHICH ARE INSTALLED SEATS, TABLES, MERCHANDISE, EQUIPMENT OR SIMILAR MATERIALS SHALL BE PROVIDED WITH AISLES LEADING TO AN EXIT.

32. EVERY AISLE SHALL BE NOT LESS THAN 3 FEET WIDE IF SERVING ONLY ONE SIDE, AND NOT LESS THAN 3 FEET 8 INCHES WIDE IF SERVING BOTH SIDES. SUCH MINOR VARIATIONS SHALL BE MEASURED AT THE POINT FARTHEST FROM AN EXIT. CROSS AISLE OR FOYER AND SHALL BE INCREASED BY 1-1/2" INCHES FOR EACH 5 FEET IN LENGTH TOWARD THE EXIT. CROSS AISLE OR FOYER WITH CONTINENTAL SEATING SIDE AISLES SHALL BE NOT LESS THAN 44 INCHES IN WIDTH.

SANITARY FACILITIES:

33. ACCESSIBLE SIGN CONTAINING TACTILE CHARACTER IS PROVIDED AT DOOR. THE SIGN SHALL BE ALONGSIDE THE DOOR ON LATCH SIDE AND AT DOUBLE DOORS, THE SIGN SHALL BE RIGHT OF THE RIGHT HAND SIDE. THE SIGN CONTAINING TACTILE CHARACTERS SHALL BE 18" MINIMUM BY 18" MINIMUM SPACE ON THE FLOOR CENTERED ON SIGN. THE SIGN TACTILE CHARACTER SHALL BE 48" MINIMUM TO THE BASELINE OF THE LOWEST TACTILE CHARACTER AND 60" MAXIMUM TO THE BASELINE OF THE HIGHEST TACTILE CHARACTER ABOVE FLOOR.

34. CLEARANCE AROUND THE WATER CLOSET SHALL BE 60" MINIMUM MEASURED PERPENDICULAR FROM THE SIDEWALL, AND 50" MINIMUM MEASURED PERPENDICULAR FROM REAR WALL. NO OTHER FIXTURES OR OBSTRUCTION SHALL BE WITHIN WATER CLOSET. CLEARANCE (PER ADA) (REFER TO LOCAL JURISDICTION FOR ADDITIONAL REQUIREMENTS)

35. WATER CLOSET COMPARTMENTS SHALL BE EQUIPPED WITH A DOOR THAT HAS AN AUTOMATIC CLOSING DEVICE, AND SHALL HAVE A CLEAR UNOBSTRUCTED OPENING WIDTH OF 32-INCHES WHEN LOCATED AT THE END AND 34-INCHES WHEN LOCATED AT THE SIDE WITH THE DOOR POSITIONED AT AN ANGLE OF 90 DEGREES FROM ITS CLOSED POSITION.

36. EXCEPT FOR DOOR OPENING WIDTH AND DOOR SWINGS, A CLEAR UNOBSTRUCTED ACCESS NOT LESS THAN 44-INCHES SHALL BE PROVIDED TO WATER CLOSET COMPARTMENTS DESIGNED FOR USE BY THE DISABLED. THE SPACE IMMEDIATELY IN FRONT OF A WATER CLOSET COMPARTMENT SHALL BE NOT LESS THAN 48-INCHES AS MEASURED AT RIGHT ANGLES TO THE COMPARTMENT DOOR IN ITS CLOSED POSITION.

37. THE HEIGHT OF ACCESSIBLE WATER CLOSETS SHALL BE A MINIMUM OF 17-INCHES AND A MAXIMUM OF 39-INCHES MEASURED TO THE TOP OF TOILET SEAT.

38. TOILET FLUSH CONTROLS SHALL BE OPERABLE WITH ONE HAND, AND SHALL NOT REQUIRE TIGHT GRASPING, PINCHING, OR TWISTING OF THE WRIST. CONTROLS FOR THE FLUSH VALVES SHALL BE MOUNTED ON THE WIDE SIDE OF THE TOILET AREAS, NO MORE THAN 44-INCHES ABOVE THE FLOOR. THE FORCE REQUIRED TO ACTIVATE CONTROLS SHALL BE NO GREATER THAN 5 POUNDS.

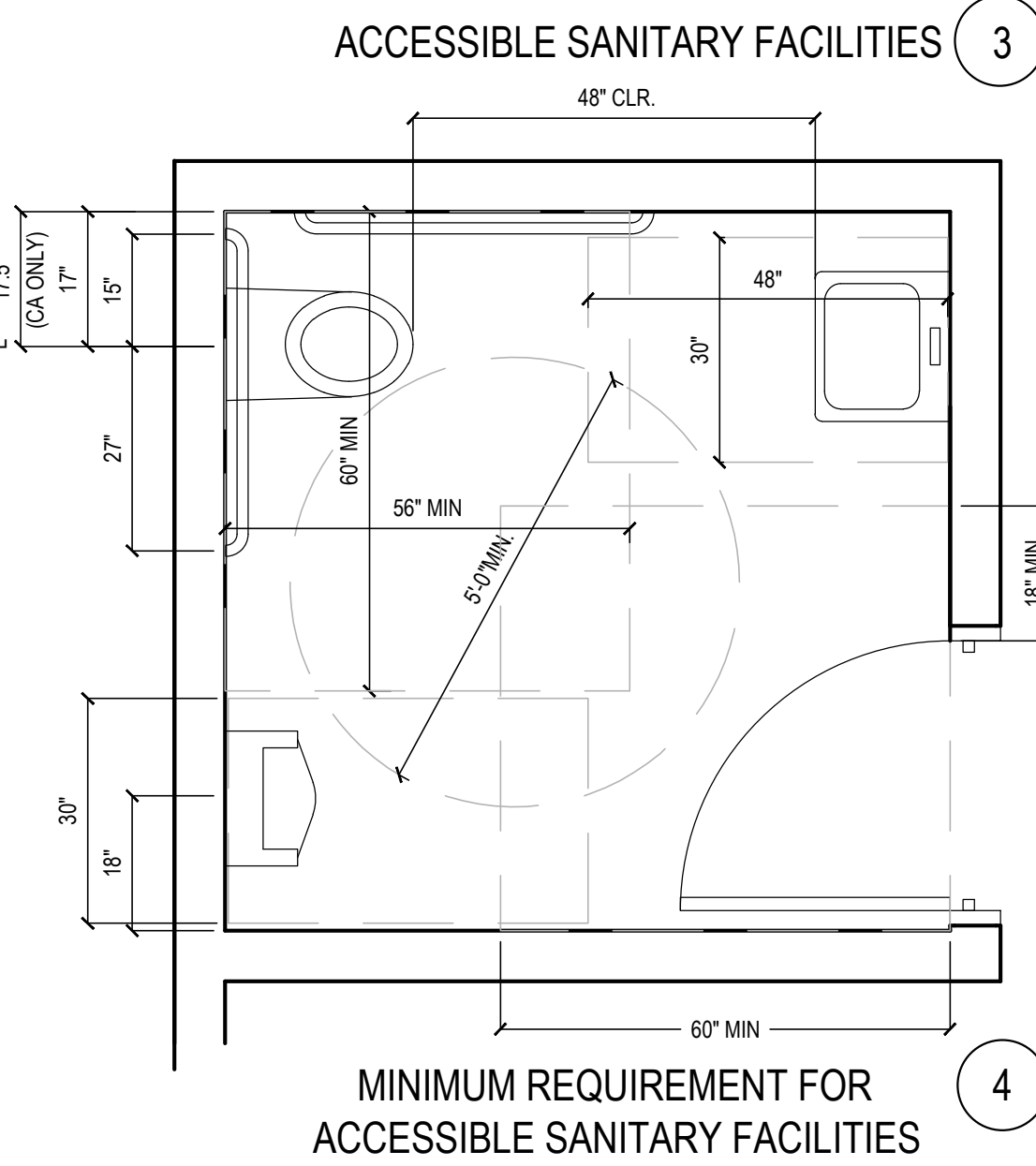
39. WHERE URINALS ARE PROVIDED, AT LEAST ONE SHALL HAVE A CLEAR SPACE 30-INCHES WIDE X 48-INCHES LONG IN FRONT OF THE URINAL.

40. WHEN MORE THAN ONE URINAL IS PROVIDED, AT LEAST ONE SHALL BE THE STALL-TYPE OR THE WALL-HUNG TYPE WITH THE RIM 17" MAXIMUM ABOVE THE FINISH FLOOR. URINALS SHALL BE 13-1/2" DEEP MINIMUM MEASURED FROM THE OUTER FACE OF THE URINAL RIM TO THE BACK OF THE FIXTURE.

41. A CLEAR FLOOR FORWARD APPROACH, AND KNEE AND TOE CLEARANCE SHALL BE PROVIDED. A SPACE 30-INCHES MINIMUM WIDE X 48-INCHES MINIMUM LONG SHALL BE PROVIDED IN FRONT OF A LAVATORY TO ALLOW A FORWARD APPROACH. ONE FULL UNOBSTRUCTED SIDE OF THE CLEAR FLOOR SHALL ADJOIN AN ACCESSIBLE ROUTE OR ADJOIN ANOTHER CLEAR FLOOR SPACE. SUCH CLEAR FLOOR SPACE SHALL BE PERMITTED TO INCLUDE: KNEE AND TOE CLEARANCE UNDERNEATH THE LAVATORY.

42. LAVATORIES SHALL BE INSTALLED WITH THE FRONT OF THE HIGHER OF THE RIM OR COUNTER SURFACE 34-INCHES MAXIMUM ABOVE THE FINISH FLOOR.

43. TOE CLEARANCE: SPACE UNDER AN ELEMENT BETWEEN THE FINISH FLOOR AND 9-INCHES ABOVE THE FINISH FLOOR SHALL BE CONSIDERED TOE CLEARANCE. TOE CLEARANCE SHALL EXTEND 17-INCHES MINIMUM TO 25-INCHES MAXIMUM UNDER AN ELEMENT WITH A WIDTH OF 30-INCHES MINIMUM. SPACE EXTENDING GREATER THAN 6-INCHES BEYOND THE AVAILABLE KNEE CLEARANCE AT 9-INCHES ABOVE THE FINISH FLOOR SHALL NOT BE CONSIDERED TOE CLEARANCE.



58. IF PUBLIC TELEPHONES ARE PROVIDED, THEY SHALL COMPLY WITH DISABLED ACCESS REQUIREMENTS.

59. PROVIDE 30" X 48" CLEAR SPACE AT TELEPHONE. THE CLEAR SPACE MAY INCLUDE KNEE SPACE UNDER THE TELEPHONE.

60. THE HIGHEST OPERABLE PART OF THE TELEPHONE SHALL BE WITHIN 48-INCHES OF THE FLOOR IF FORWARD APPROACHED AND UNOBSTRUCTED SIDE REACH AND 48-INCHES MAX IF SIDE APPROACHED WITH 10" MAX OBSTRUCTED AND 46" MAX WITH 24" MAX OBSTRUCTION.

61. SIDE APPROACH TELEPHONES REQUIRE THAT THE ENCLOSURE OVERHANG BE NO MORE THAN 19-INCHES AND BE AT LEAST 27-INCHES FROM THE FLOOR.

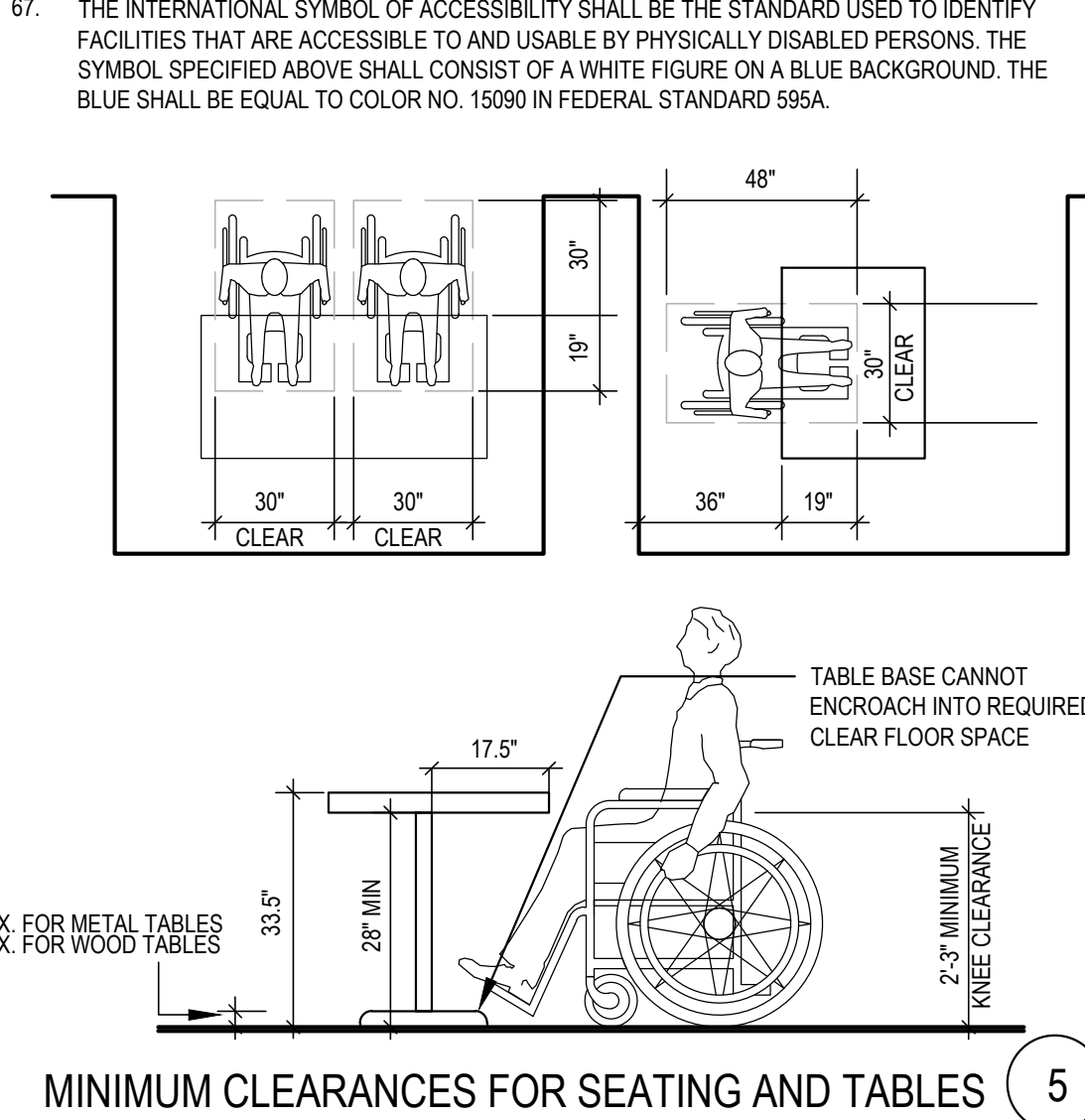
62. THE CORD FROM THE TELEPHONE TO THE HANDSET SHALL BE AT LEAST 29-INCHES LONG.

63. TELEPHONES SHALL BE HEARING AID COMPATIBLE PER ICC/ANSI SEC. 704.2.5

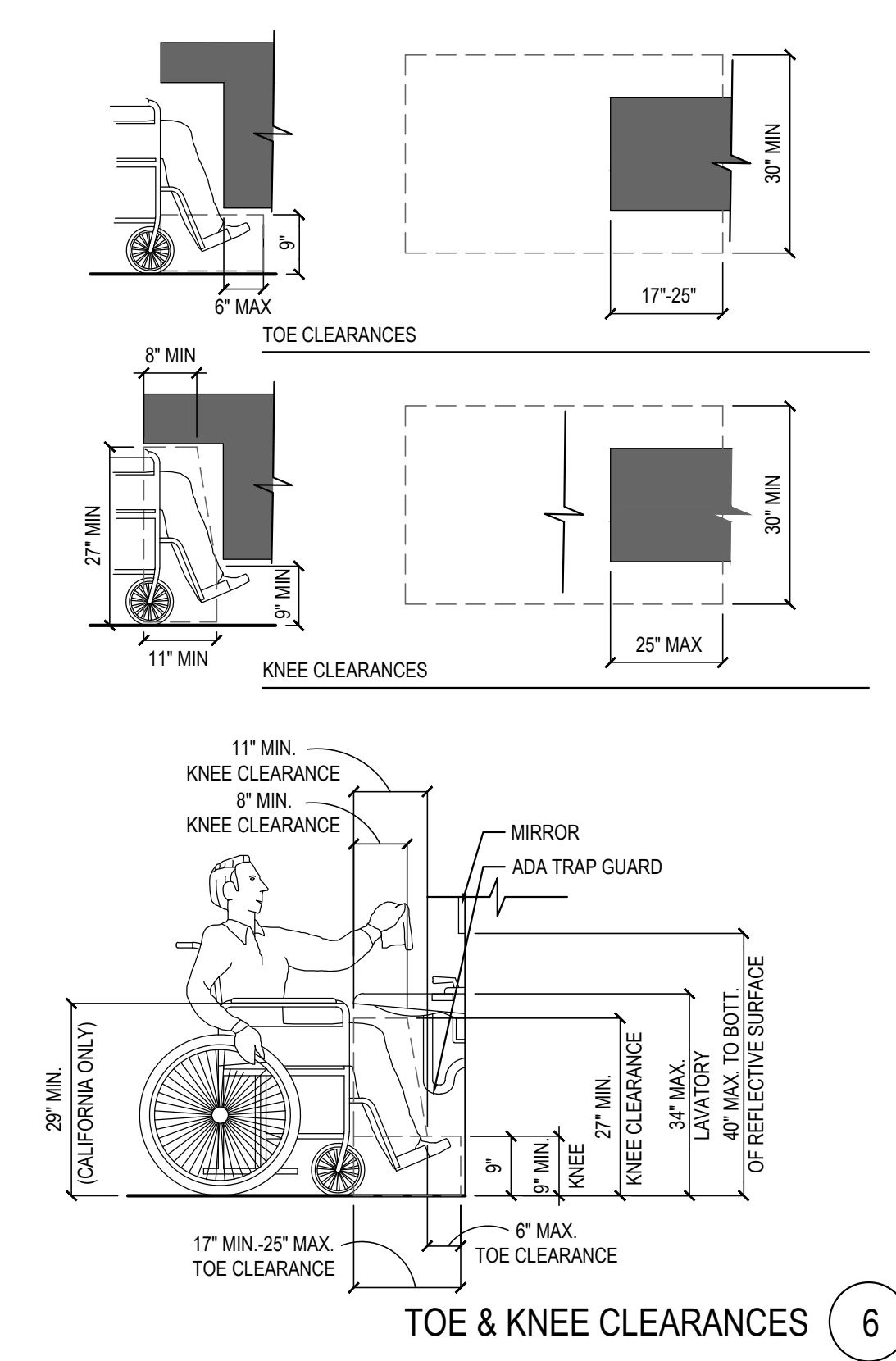
64. TELEPHONES SHALL HAVE PUSH-BUTTON CONTROLS WHERE SERVICE FOR SUCH EQUIPMENT IS AVAILABLE.

65. THE CENTER OF RECEPTACLE OUTLETS SHALL BE NOT LESS THAN 15- INCHES ABOVE THE FLOOR OR WORKING PLATFORMS.

66. THE CENTER OF THE GRIP OF THE OPERATING HANDLE OF SWITCHES INTENDED TO BE USED BY THE OCCUPANT OF THE ROOM OR AREA TO CONTROL LIGHTING AND RECEPTACLE OUTLETS, APPLIANCES, OR COOLING, HEATING AND VENTILATING EQUIPMENT, SHALL BE 48" MAX HEIGHT FOR UNOBSTRUCTED FORWARD AND SIDE REACH. 48" MAX HEIGHT WITH 10" MAX. OBSTRUCTION AT SIDE REACH. 46" MAX HEIGHT AT 24" MAX OBSTRUCTION AT SIDE REACH



MINIMUM CLEARANCES FOR SEATING AND TABLES (5



CALIFORNIA ONLY: EACH PARKING SPACE RESERVED FOR PERSONS WITH PHYSICAL DISABILITIES SHALL BE IDENTIFIED BY A REFLECTORIZED SIGN PERMANENTLY POSTED IMMEDIATELY ADJACENT TO AND VISIBLE FROM EACH STALL OR SPACE CONSISTING OF A PROFILE VIEW OF A WHEELCHAIR WITH OCCUPANT IN WHITE ON DARK BLUE BACKGROUND. THE SIGN SHALL NOT BE SMALLER THAN 70 SQUARE INCHES IN AREA AND WHEN IN PLACE OF TRAVEL, SHALL BE POSTED AT A MINIMUM OF 60-INCHES FROM THE BOTTOM OF THE SIGN TO THE PARKING SPACE FINISHED GRADE. AN ADDITIONAL SIGN SHALL BE POSTED AT ENTRANCE TO OFF-STREET PARKING FACILITY OR IMMEDIATELY ADJACENT TO AND VISIBLE FROM EACH STALL OR SPACE. THE SIGN SHALL NOT BE LESS THAN 12-INCHES BY 18-INCHES IN SIZE WITH LETTERING NOT LESS THAN 1-INCH IN HEIGHT. REFER TO DETAIL 4-1-A-408

AT KITCHEN: SINKS, FAUCET CONTROLS AND OPERATING MECHANISMS SHALL BE OPERABLE WITH ONE HAND AND SHALL NOT REQUIRE THUMB GRASPING, PINCHING OR TWISTING OF THE WRIST. THE FORCE REQUIRED TO ACTIVATE CONTROLS SHALL BE NO GREATER THAN 5 LBS. LEVER-OPERATED, PUSH-TYPE AND ELECTRONICALLY CONTROLLED MECHANISMS ARE EXAMPLES OF ACCEPTABLE DESIGN. SELF-CLOSING VALVES ARE ALLOWED IF THE FAUCET REMAINS FOR AT LEAST 10 SECONDS.



All ideas, designs, arrangement and plans indicated or represented by this drawing are the property of Panda Express Inc. and were created for use on this specific project. None of these ideas, designs, arrangements or plans may be used by or disclosed to any person, firm, or corporation without the written permission of Panda Express Inc.

LANDLORD REVIEW	03-04-2022
FINAL LANDLORD REV.	06-20-2022
PERMIT	07-19-2022
BID SET	10-06-2022
CONSTRUCTION SET	01-16-2023

PANDA PROJECT #: D7861
ARCH PROJECT #: JCDT21-0268

certify that these documents were prepared or approved by me, and that I am a duly licensed architect/ engineer under the laws of the State of Maryland, license number 20249, expiration date 2/10/2024

NORR
ARCHITECTS ENGINEERS PLANNERS

PANDA EXPRESS
TRUE WARM & WELCOME
10300 Mill Run Circle
Owings Mills, MD 21117

HANDICAPPED NOTES AND DETAILS

TRUE WARM & WELCOME 2300 R6 RR