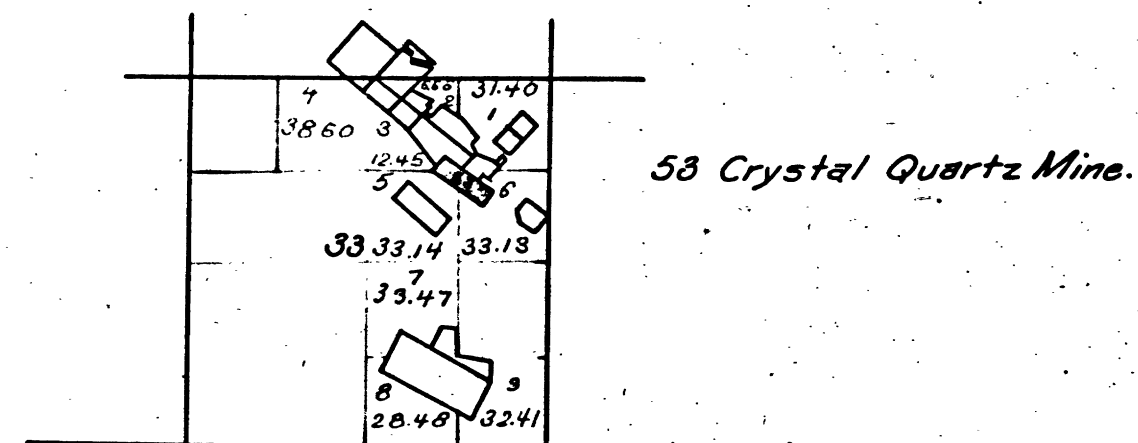


Township N°3 North. Range N°13 East, Mount Diablo Meridian.

02.5.

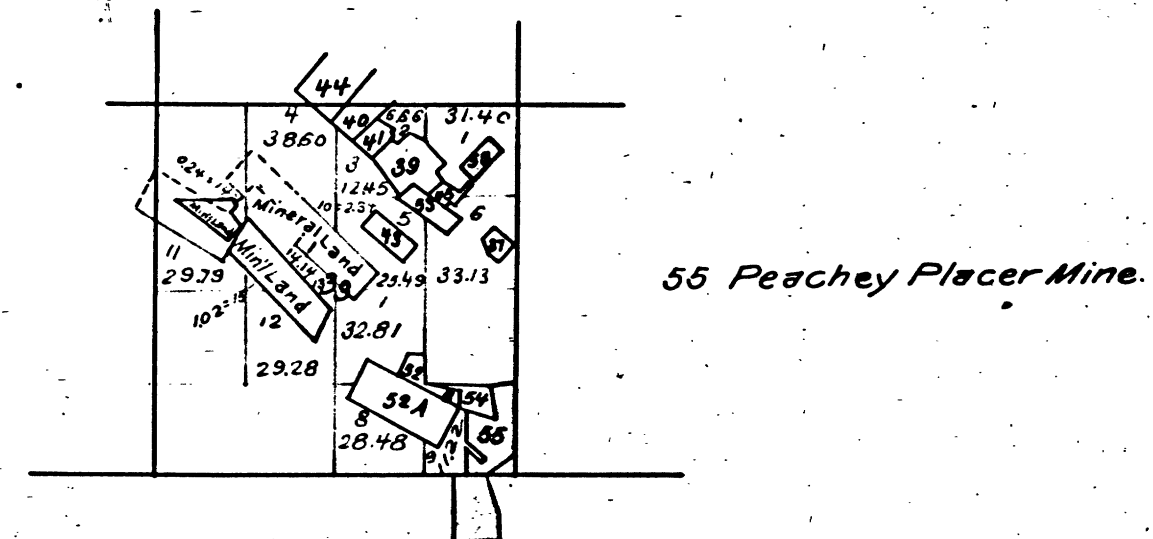
T.3.N. R.13.E. M.D.M.



The above diagram of Section 33, Township N°3 North, Range N°13 East, Mount Diablo Meridian, is correctly copied from the original map as amended and on file in this Office.
U.S. Surveyor General's Office,
San Francisco, California,
December 13th 1882.

W. H. Brown.
U.S. Surv. Gen'l Cal.

T.3.N. R.13.E. M.D.M.

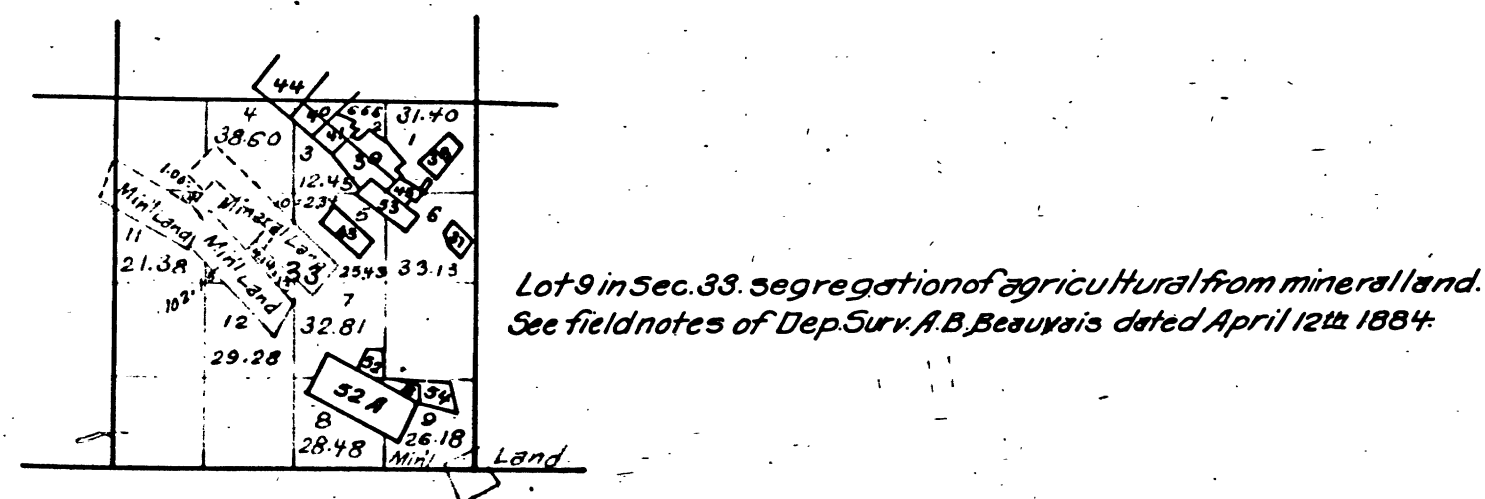


The above diagram showing amendments to Section N°33, Township N°3 North, Range N°13 East, Mount Diablo Meridian is correctly copied from the original map as amended and on file in this office.

U.S. Surveyor General's Office,
San Francisco, Cal.,
November 17th 1886

R. P. Hammond Jr.
U.S. Surv. Gen'l Cal.

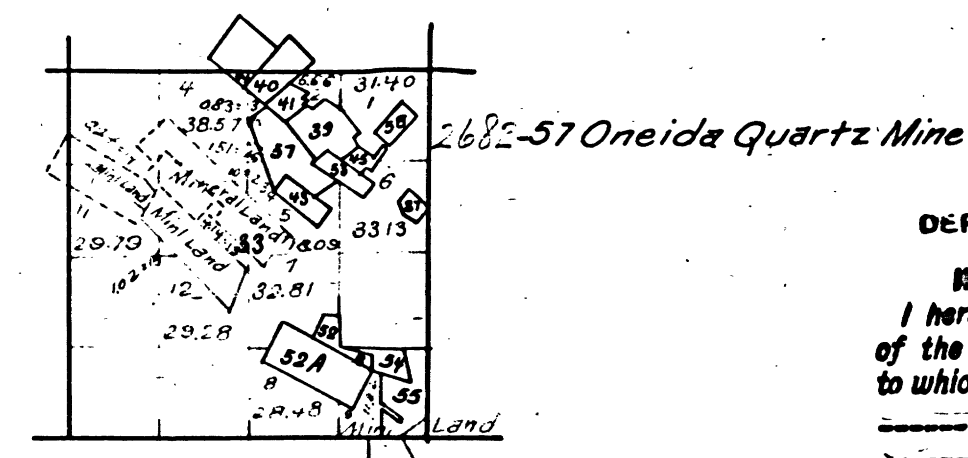
T.3.N. R.13.E. M.D.M.



The above diagram showing amendments to Section 33, Township N°3 North, Range N°13 East, Mount Diablo Meridian is correctly copied from the original map as amended and on file in this Office.
U.S. Surveyor General's Office,
San Francisco, California,
May 17th 1884.

W. H. Brown.
U.S. Surv. Gen'l Cal.

T.3.N. R.13.E. M.D.M.



DEPARTMENT OF THE INTERIOR,
GENERAL LAND OFFICE,
Washington, D. C. Feb. 5, 1908.
I hereby certify that this is a true copy
of the plats of official survey of the lands
to which it relates, on file in this office.

A. L. Humphreys
Recorder, General Land Office.

The above diagram of Section 33, Township N°3 North, Range N°13 East, Mount Diablo Meridian is correctly copied from the original map as amended and on file in this Office.
U.S. Surveyor General's Office,
San Francisco, California,
April 16th 1888.

R. P. Hammond Jr.
U.S. Surv. Gen'l Cal.

41 247

CHAINS

CHAINS

BLM 1113

5

T.3.N. R.13.E. M.D.M.