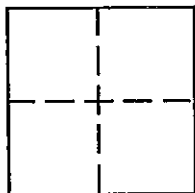


CORNER RECORD

Document Number 875City of PIEDMONTCounty of ALAMEDA

, California

Brief Legal Description Survey #210 of :Map of Surveys 200 to 220: IROS 40

CORNER TYPE

Government Corner ☐Meander ☐Rancho ☐Date of Survey May 17, 1997Control ☒Property ☒Other ☐

COORDINATES

(Optional)

N. _____

E. _____

Zone _____ Datum _____

Elev. _____

 Corner — Left as found ☒ Found and tagged ☐ Established ☒ Reestablished ☐ Rebuilt ☐

Identification and type of corner found: Evidence used to identify or procedure used to establish or reestablish the corner.

Found lead plug and tack in sidewalk as per orig. record of survey and
as shown upon the reverse side of this document

A description of the physical condition of the monument as found and as set or reset:

Set 1 1/2" re-bar and plastic cap (PLS 4700) on corner as shown on reverse.

SURVEYOR'S STATEMENT

 The Corner Record was prepared by me or under my direction in conformance with
 the Land Surveyors' Act on May 16, 1997.

Signed

L.S. ~~OFFICE~~ Number 4700

GILBERT E. HAYES

COUNTY SURVEYOR'S STATEMENT

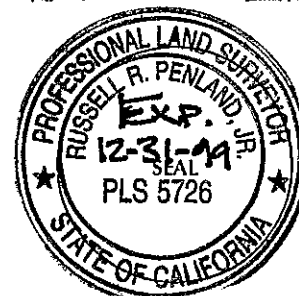
 This Corner Record was received 5-19 1997 and examined
 and filed 5-30 1997.

Signed

Title

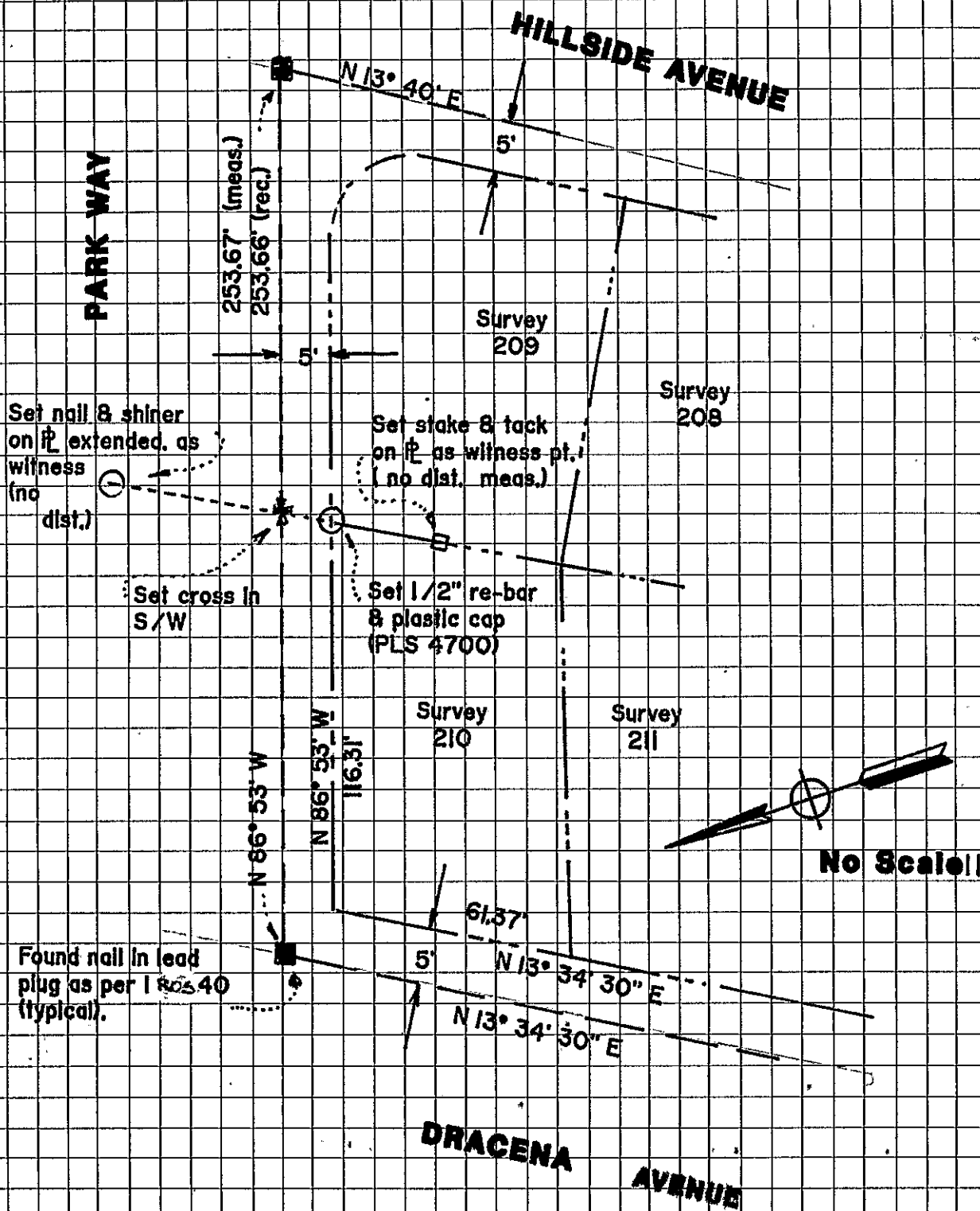
DEPUTY COUNTY SURVEYOR

County Surveyor's Comment _____



PARK WAY

HILLSIDE AVENUE



875