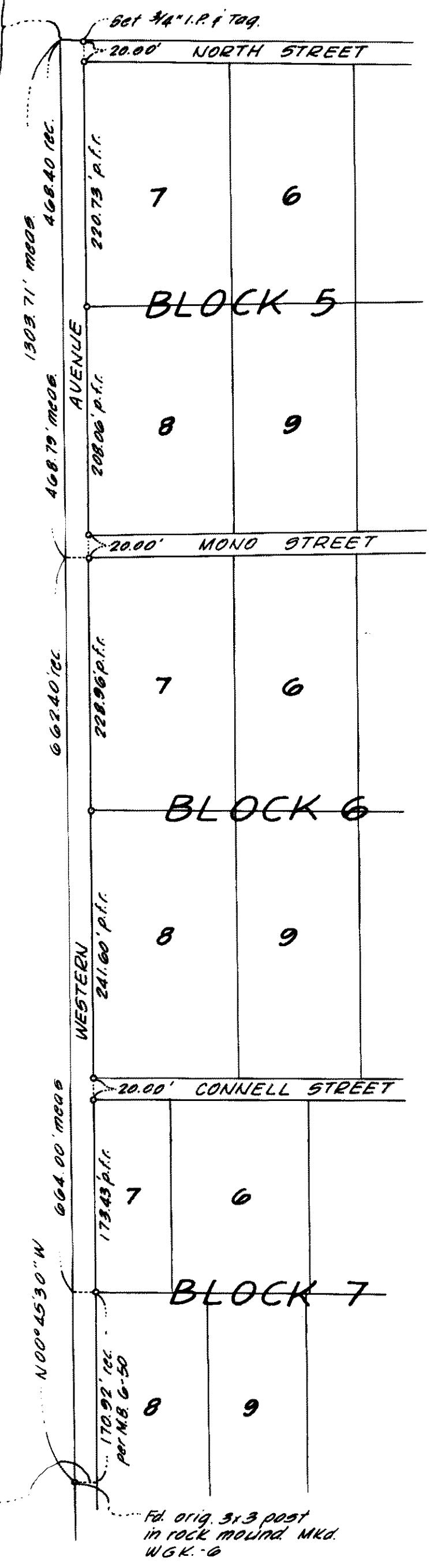
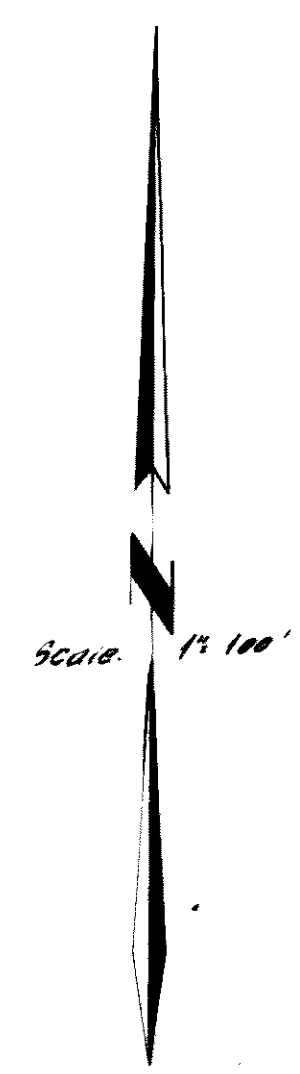


Fd. orig. 3x3 Subd. Cor.
Post lying on its side
could not use for line
or distance - no rock
mound. See M.B. 6-50 for
establishment of N.W.
Subd. corner



MAMMOTH CAMP TR. NO. 1



SURVEYOR'S CERTIFICATE

This map correctly represent a survey made under my direction in conformance with the requirements of Chapter 15 of Division 3 of the Business and Professions Code in August 1909 at the request of the Security Pacific National Bank.

Gordon C. Holmes
Gordon C. Holmes, RCE 10467

COUNTY SURVEYOR'S CERTIFICATE

I have examined this map for conformance with the requirements of Chapter 15 of Division 3 of the Business and Professions Code this _____ day of _____, 1909.

County Surveyor

NO. - 515 COUNTY RECORDER'S CERTIFICATE

Filed for record this 15th day of Sept., 1909
at 12:25 A.M. in Book 6 of Maps at Page 57
at the request of Gordon C. Holmes.

Quinn M. Thelk
County Recorder.

BASIS OF BEARINGS

The record bearing of N00°50'09"E of the West Line of Sec. 3, T.4S., R. 27E., M.D.M., as shown on the Record of Survey recorded in Book 5 Page 2 of Maps was used as the basis of bearings shown on this map.

MONUMENT NOTE

- indicates a found point as noted.
- indicates a 2x2 1/2 ft. set unless otherwise noted.

RECORD OF SURVEY

OF THE WEST LINE OF MAMMOTH CAMP TRACT NO. 1, IN THE NORTH-EAST QUARTER OF SECTION 4, T. 4 S., R. 27 E., M. D. M., IN THE COUNTY OF MONO, STATE OF CALIFORNIA.

Gordon C. Holmes
RCE 10467

August, 1909
Bishop, California