



phone 919. 361. 5000
fax 919. 361. 2269
license number: 552

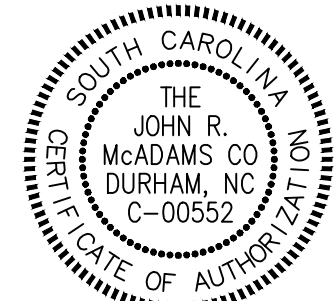
CLIENT



CAPITAL GROWTH
BUCHALTER

MICALISTER'S DELI - DEKALB ST
SITE DEVELOPMENT PLANS
2117 WEST DEKALB ST
CAMDEN, SOUTH CAROLINA, 29020

LAUREN MICHAEL CARROLL 2021
SOUTH AFRICA
REGISTERED PROFESSIONAL ENGINEER
No. 38746
LAUREN MICHAEL CARROLL

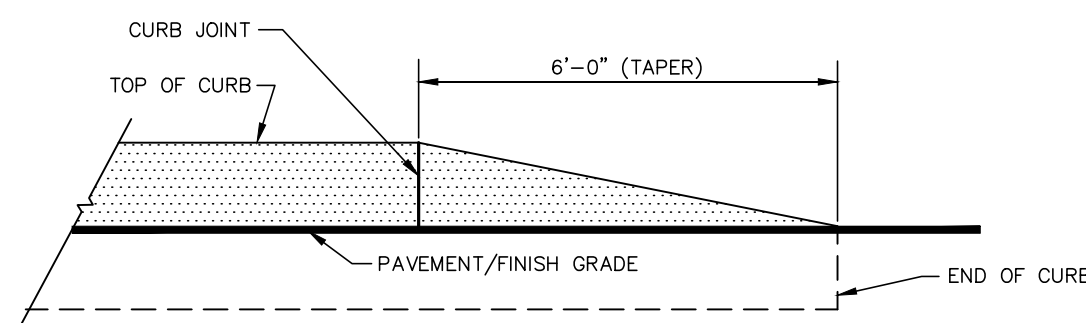


NO.	DATE	REVISION DESCRIPTION
1	08. 16. 2021	REVISED PER CITY COMMENTS
2	-	-
3	-	-
4	-	-
5	-	-
6	-	-

PROJECT NO.	CGB-2020110347
FILENAME	CGB2020110347-CVR-DETAILS
CHECKED BY	SW
DRAWN BY	LAM
SCALE	N/A
DATE	05. 19. 2021

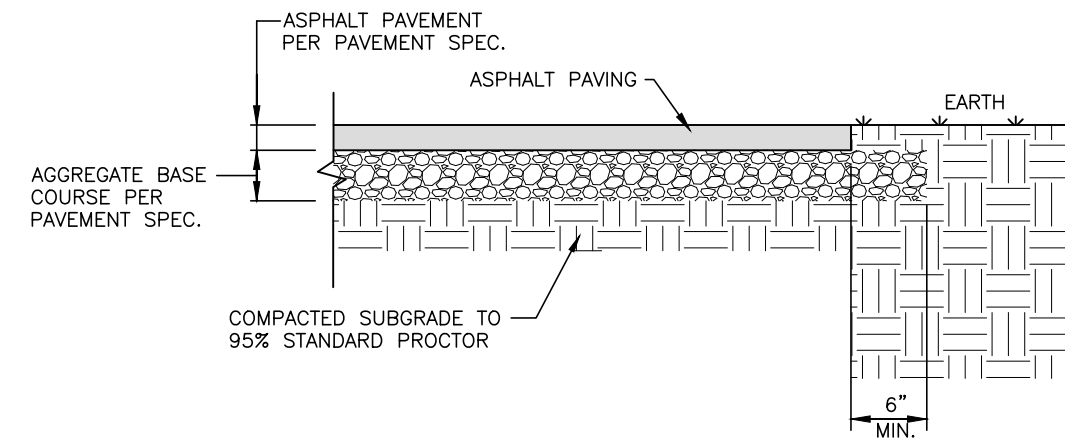
SITE DETAILS

C8.00



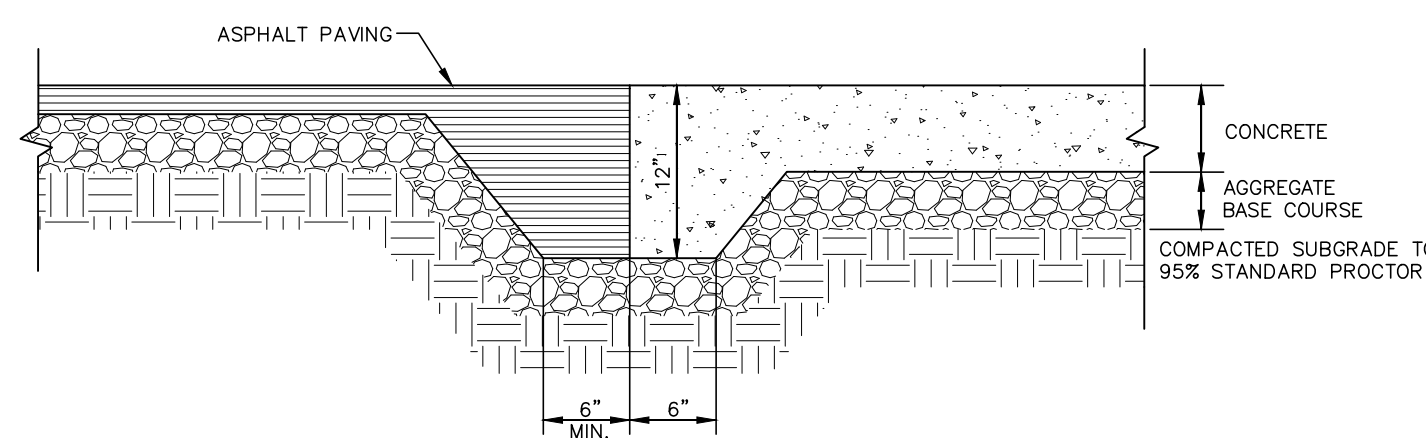
NOSE-DOWN CURB DETAIL

N.T.S.



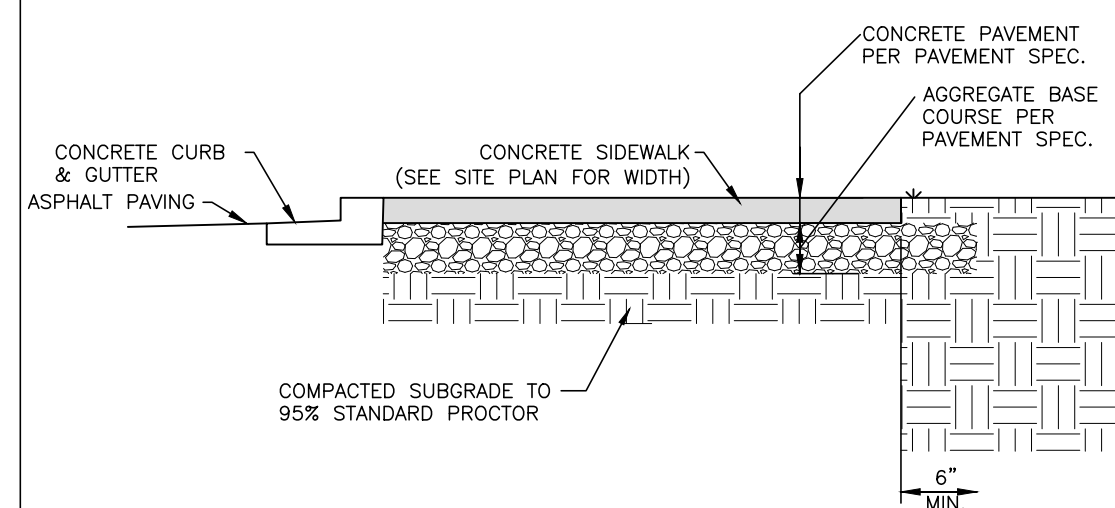
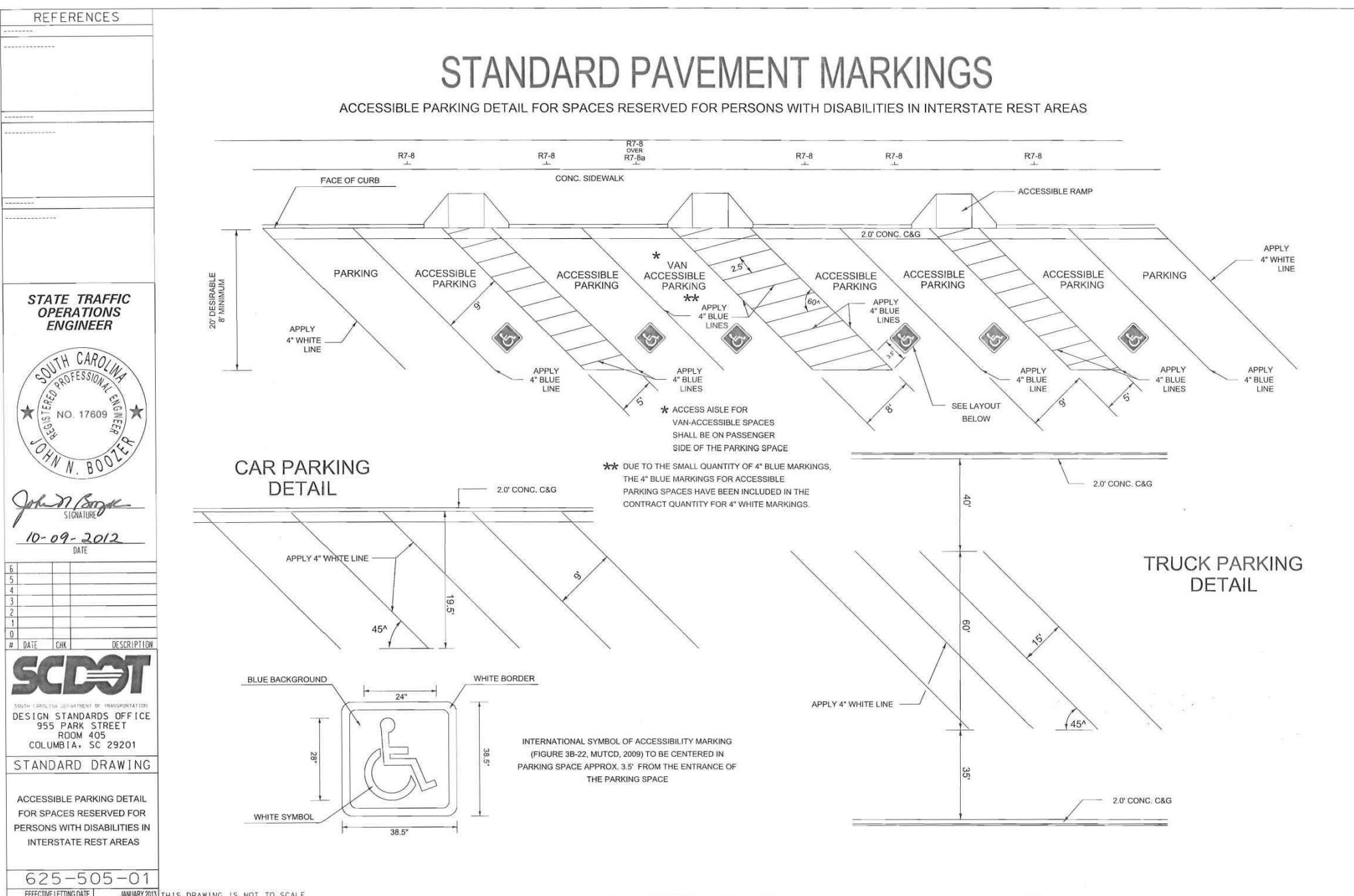
ASPHALT EDGE DETAIL

N.T.S.



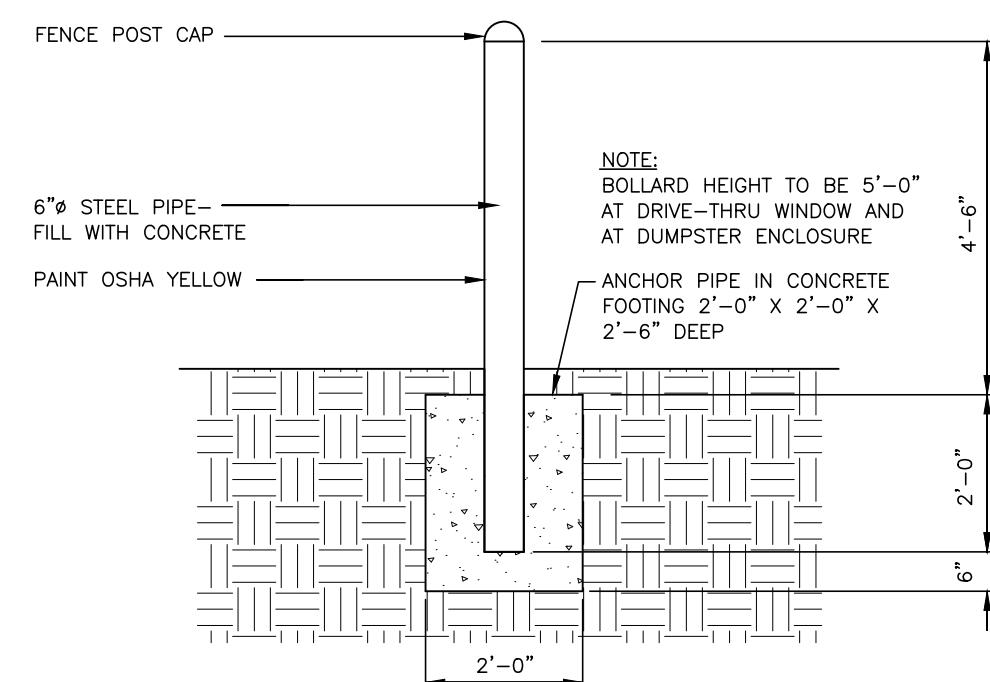
ASPHALT TO CONCRETE PAVEMENT TRANSITION

N.T.S



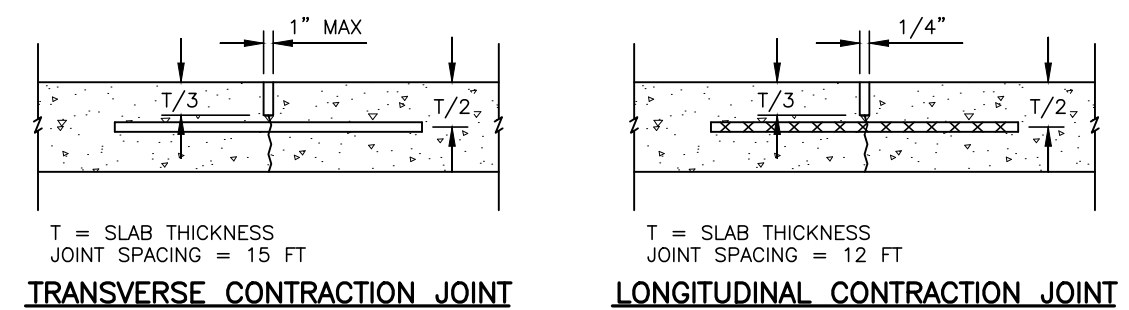
CONCRETE SIDEWALK DETAIL

N.T.S.

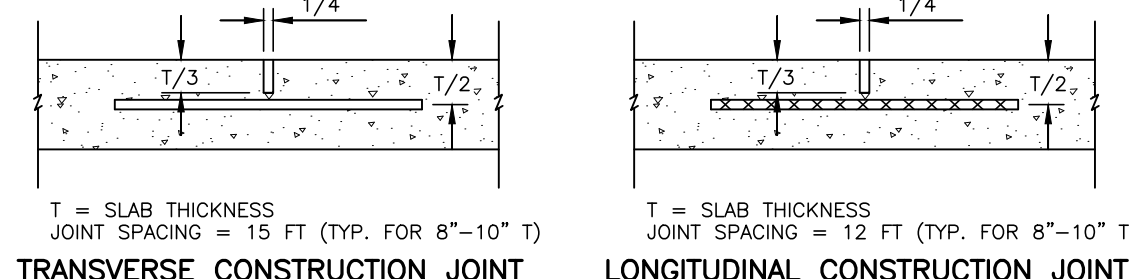


STEEL PIPE BOLLARD

N.T.S.



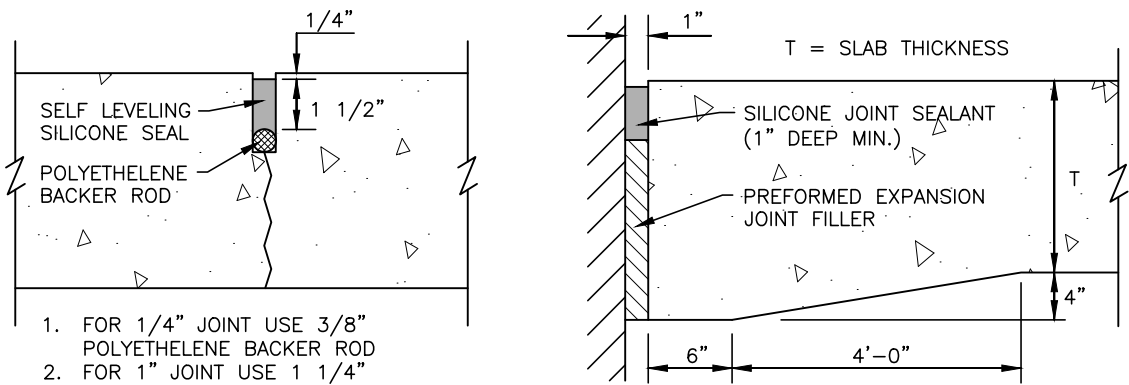
TRANSVERSE CONTRACTION JOINT



TRANSVERSE CONSTRUCTION JOINT

NOTES:

1. LONGITUDINAL JOINTS ARE TIED (DEFORMED BARS)
 2. TRANSVERSE JOINTS ARE DOWELED (SMOOTH BARS)
 3. ISOLATION JOINTS (EXPANSION) AT OBSTACLES WITHIN PAVEMENT.
 4. DOWELS FOR T = 8"-10" USE 1.25" DOWEL
 5. DOWELS FOR T >10" USE 1.50" DOWEL
 6. DOWELS SHALL BE EPOXY COATED 18" LONG, SPACED 12" O.C.
 7. TIE BARS SHALL BE #5 REINFORCING BARS 30" LONG, SPACED 30" O.C.
- IN ACCORDANCE WITH ASHTO M31



CONCRETE PAVEMENT JOINT DETAILS

N.T.S.