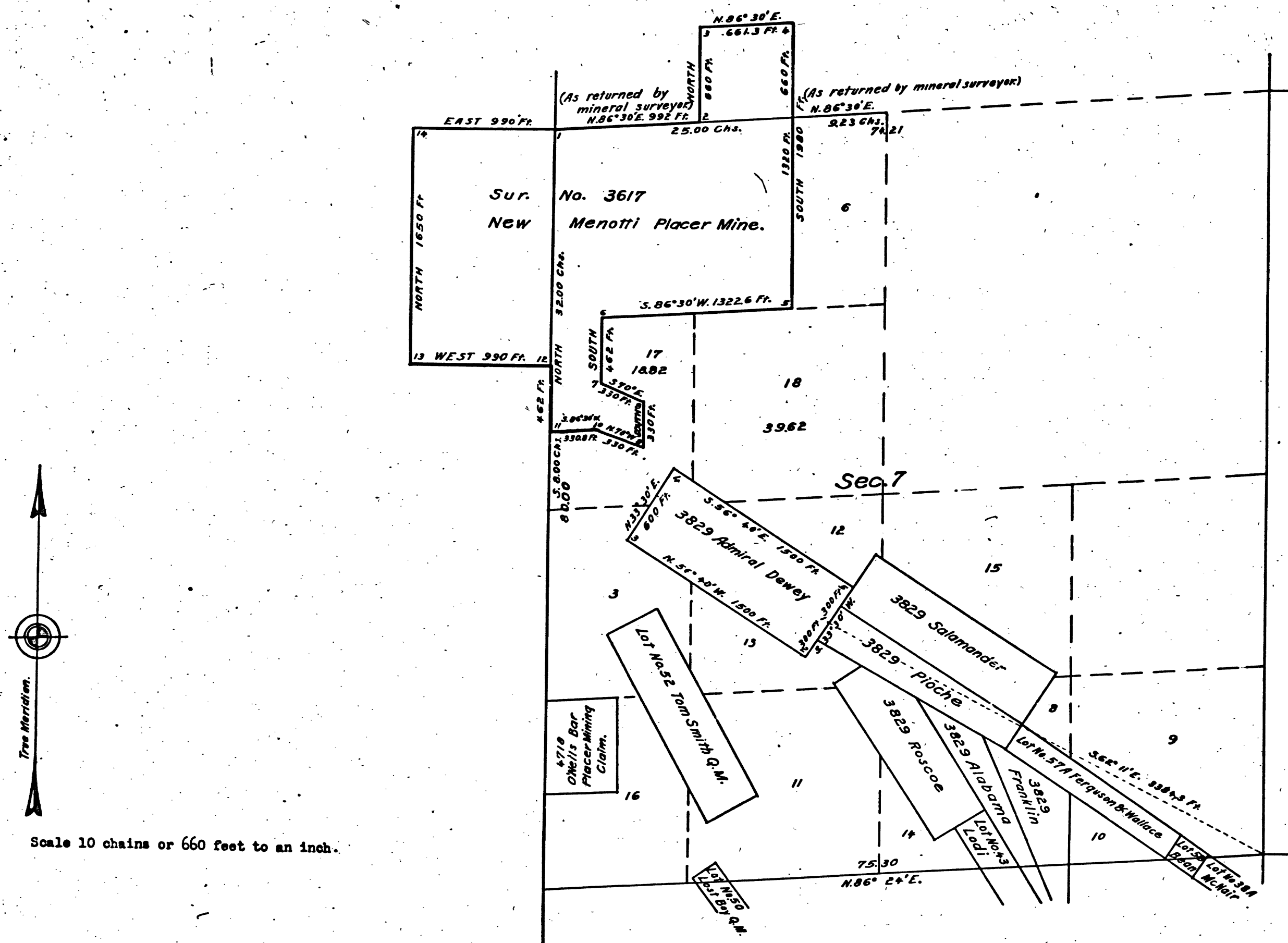


SUPPLEMENTAL PLAT OF SECTION 7,
TOWNSHIP NO. 4 NORTH, RANGE NO. 14 EAST, MOUNT DIABLO MERIDIAN, CALIFORNIA.



Scale 10 chains or 660 feet to an inch.

Authorization; letter Sacramento 010747 "N" JAW dated September 8, 1926.

This supplemental plat of section 7, T. 4 N., R. 14 E., M. D. M., California, plats approved April 18, 1876, April 9, 1901 and May 19, 1924, is made for the purpose of eliminating Lot 37, delineating mineral survey 3617, New Menotti Placer Mine, and obtaining the area and legal description of that portion of lot 2 remaining after segregating therefrom mineral survey 3617, New Menotti Placer Mine, to accommodate stock-raising homestead entry Sacramento 010747 of Joseph William Zugar, and is hereby approved.

Public Survey Office
San Francisco, California.
September 21, 1926.

Frank E. Barker
Office Cadastral Engineer.

DEPARTMENT OF THE INTERIOR
GENERAL LAND OFFICE

Washington, D. C., December 1, 1926.

This supplemental plat, having been correctly prepared,
is hereby accepted.

Thorvald
Assistant Commissioner.

41 350

AND RECEIVER RECEIPT

Dec 21 1926.

CHAINS

T. 4 N. R. 14 E. MD.

BLM 196