

NOTE +

1.0 indicates a 3/4" dia. iron pin tagged L.S. 2248

2. Bearings are based on the N. 83°00'W bearing of the North side of Lot 9, Blk. 4

3. For reference see Field Book 190, page 47, Calaveras County Surveyors Office.

4. Present owner, William C. Kreth, 5320 71st St., Sacramento.

Filed for record in the office of the County Recorder of Amador County, Calif., in Book No. 5 of Record of Surveys, page 15, this 5th day of Nov., 1956.

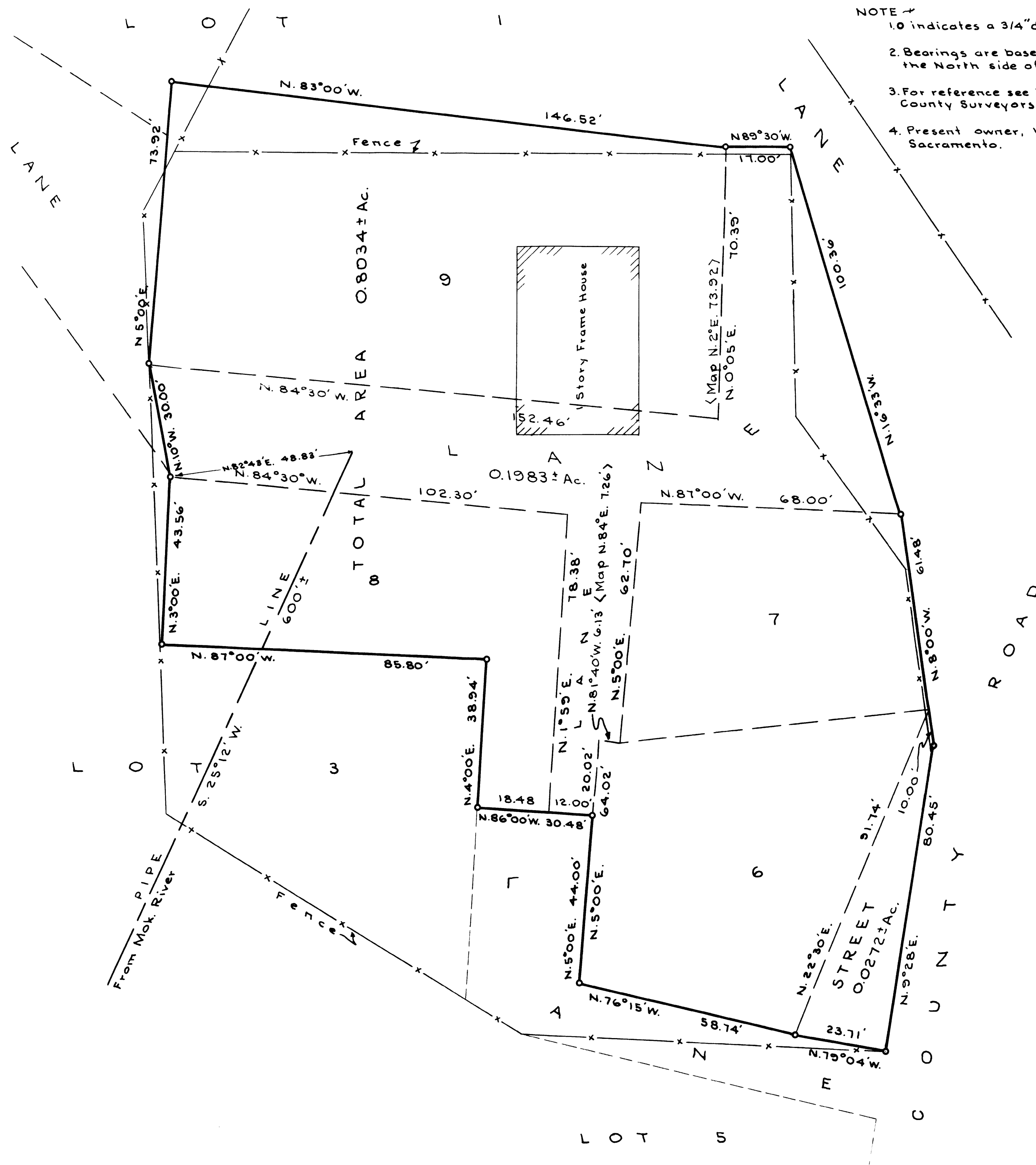
Fee \$5.00 Paid

Anthony Sutton
County Recorder

I, Paul B. Russell, hereby certify that this map is true and complete, and that it correctly represents my survey of the land shown on this map. I do further certify that the monuments shown actually exist in the positions shown and said monuments, together with the distances and bearings, are sufficient to enable the survey to be retraced.

Paul B. Russell

Paul B. Russell - L.S. 2248



1804

Filed for Record at the Request of
Paul B. Russell
Nov. 5, 1956
30 9 9
Recorded in Vol. 5
Map & Plate page 15
Anthony Sutton
County Recorder
By *Paul B. Russell*
Fee \$5.00 Paid

RECORD OF SURVEY MAP

OF

LOTS 6, 7, 8 & 9, BLOCK 4 AND PORTIONS

OF ADJECENT STREETS

TOWNSITE OF LANCHA PLANA

AMADOR COUNTY, CALIFORNIA

SURVEYED FOR PACIFIC CLAY PRODUCTS CO.

BY PAUL B. RUSSELL - L.S. 2248 -

SCALE - 1" = 20'

OCT., 1956