

LEGEND

- STANDARD CITY STREET MONUMENT TO BE SET PER TRACT 9318 OR 9319
- STANDARD CITY STREET MONUMENT SET AND STAMPED "LS 5106"
- TOTAL OF DIMENSIONS ALONG THIS LINE OR CURVE
- RADIAL BEARING
- MONUMENT TO MONUMENT
- PUBLIC UTILITY EASEMENT DEDICATED HEREON
- PRIVATE YARD EASEMENT
- PRIVATE INGRESS & EGRESS EASEMENT
- E.E.E. EMERGENCY ACCESS EASEMENT
- S.E. SIDEWALK EASEMENT
- DISTINCTIVE BORDER LINE
- PROPERTY LINE
- STREET CENTERLINE OR MONUMENT LINE
- EXISTING EASEMENT LINE
- NEW OR PROPOSED EASEMENT LINE

CURVE TABLE				LINE TABLE		
CURVE	DELTA	RADIUS	LENGTH	LINE	BEARING	LENGTH
C1	23°24'32"	20.00'	8.17'	L1	N19°30'02"E	16.78'
C2	24°19'48"	20.00'	8.49'	L2	N61°43'00"W	1.95'
C3	05°48'06"	49.00'	4.96'	L3	N38°17'00"E	17.84'
C4	14°20'10"	103.50'	25.90'	L4	N67°01'55"W	2.31'
C5	09°12'58"	103.50'	16.65'	L5	N22°58'05"E	29.52'
C6	07°45'07"	173.00'	23.41'			
C7	07°33'48"	173.00'	22.84'			
C8	00°33'26"	2848.00'	27.70'			
C9	00°47'06"	2848.00'	39.02'			
C10	00°45'55"	2848.00'	38.04'			
C11	00°29'19"	2848.00'	24.29'			
C12	00°42'26"	2848.00'	35.16'			
C13	00°48'18"	2848.00'	40.01'			
C14	00°48'17"	2848.00'	40.00'			
C15	00°48'17"	2848.00'	40.00'			
C16	00°56'37"	2848.00'	46.90'			
C17	15°18'55"	150.00'	41.10'			
C18	01°58'44"	52.00'	1.80'			
C19	02°59'56"	200.00'	10.47'			

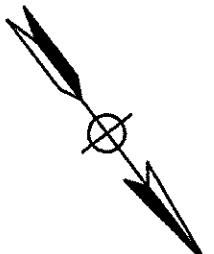
LINE TABLE			
LINE	BEARING	LENGTH	
L1	N19.30'02"E	16.78'	
L2	N51.43'00"W	1.95'	
L3	N38.17'00"E	17.84'	
L4	N67.01'55"W	2.31'	
L5	N22.58'05"E	29.52'	

NOTES

- DISTANCES AND DIMENSIONS ARE SHOWN IN FEET AND DECIMALS THEREOF.
- THE DISTINCTIVE BORDER LINE DENOTES THE BOUNDARY OF THE SUBDIVISION.
- THE AREA WITHIN THE DISTINCTIVE BORDER LINE IS 9.30 ACRES.
- LOTS A, B, C, D, E, F, G, H, AND I ARE COMMON AREAS TO BE CONVEYED TO THE HOMEOWNERS ASSOCIATION.
- TOTAL STREET DEDICATION CONTAINS ±1.45 ACRES.
- LOTS A, B, C, D, E, F, G, H, AND I ARE SUBJECT TO E.A.E., I.E.E. AND P.U.E.

BASIS OF BEARINGS

THE BEARING NORTH 19°30'02" EAST ALONG THE MONUMENT LINE OF GARRITY WAY AS SHOWN ON THE MAP OF TRACT 9318 FILED IN BOOK 741 OF MAPS AT PAGE 19, SANTA CLARA COUNTY RECORDS, WAS TAKEN AS THE BASIS OF BEARINGS SHOWN HEREON.



TRACT No. 9324

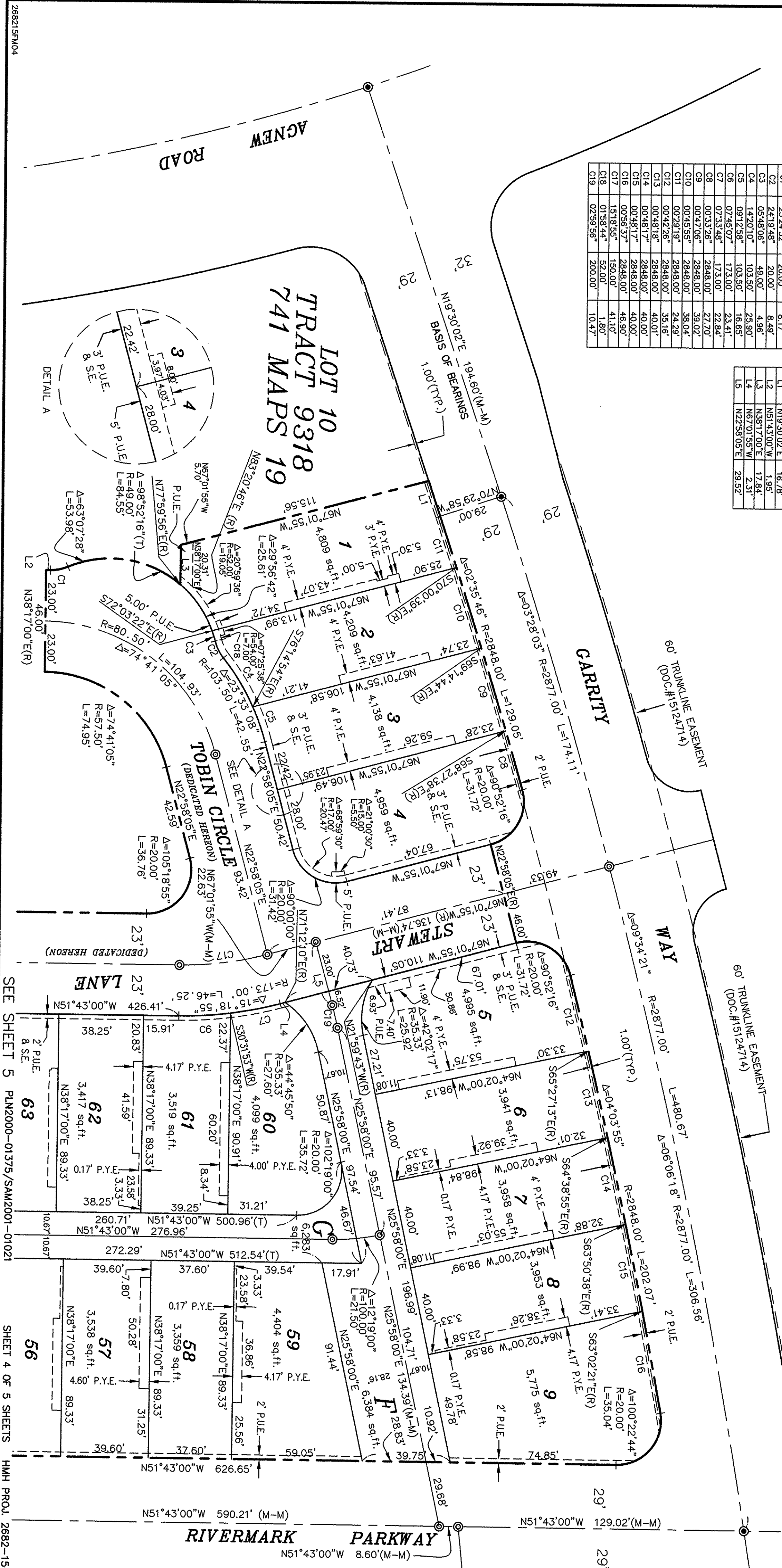
THE PROMENADE  
SANTA CLARA, CALIFORNIA

ALL OF LOTS 11 & 12 AS SHOWN ON THE TRACT 9318 FILED FOR RECORD IN BOOK 741 OF MAPS, PAGES 19 THROUGH 27, SANTA CLARA COUNTY RECORDS, LYING ENTIRELY WITHIN THE CITY & COUNTY OF SANTA CLARA, CALIFORNIA

SEPTEMBER, 2001



**HMH, Incorporated**  
*Civil Engineers • Planners • Surveyors*  
8700 OAKLAND ROAD, SUITE 200  
P.O. BOX 68180 SAN JOSE, CALIFORNIA 95061-8180



SEE SHEET 2

15975552

11-12  
145