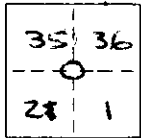


CORNER RECORD

COUNTY OF ~~TX~~ MONO T. 1N/ R. 26E MERIDIAN CALIFORNIA
 CORNER TYPE: GOV'T. CORNER ☐ MEANDER ☐ RANCHO ☐ CONTROL ☐ OTHER ☒ CITY OF L.A.
 CORNER IDENTIFICATION - DATE OF VISIT 28 AUG 1975



Section corner Southeast 35

Described by M. Allstead

CORNER - LEFT AS FOUND ☒ FOUND AND TAGGED ☐ REESTABLISHED OBLITERATED CORNER ☐ REBUILT ☐

PHYSICAL DESCRIPTION OF CORNER FOUND: EVIDENCE AND METHOD USED TO IDENTIFY OR REESTABLISH

The corner is marked by a 2 1/2" diam galvanized pipe mounted in concrete base with rock set in concrete. The pipe has a galvanized cap threaded on top. The cap is 1.75 ft above ground. There is an old 3" diam post next to the pipe on the South side. The corner is located in an area covered by 3 to 4 ft high sage and bitterbrush. The corner is 1/4 mile Southeast of Hwy 120.

PHYSICAL DESCRIPTION OF MONUMENTS REBUILT OR PERPETUATED

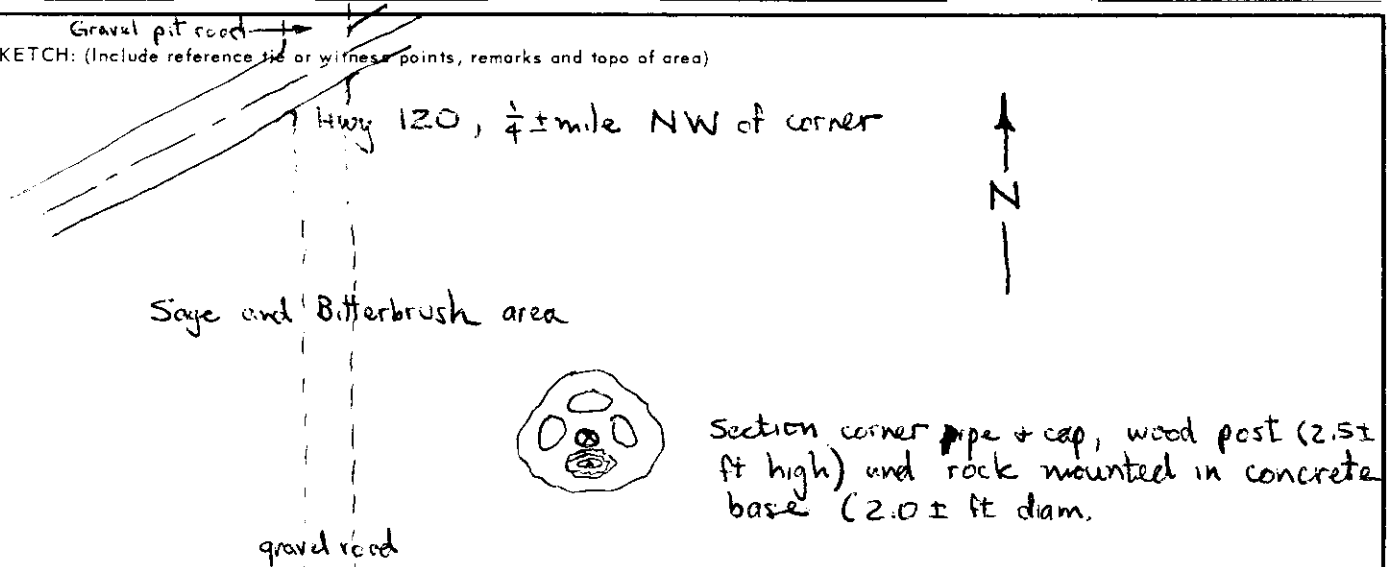
There is an old rusted 1 1/2" diam pipe, 4.0 ± ft long lying on ground next to new pipe & cap. The cap is inscribed "L.S. 3615" and "D.W. & P.". There is a gravel road running N S, 250 ± ft West of the corner.

CALIFORNIA COORDINATE SYSTEM ORDER: FIRST ☐ SECOND ☐ THIRD ☐

STATIONS USED: NGS (USC & GS) ☐ STATE ☐ COUNTY ☐ OTHER ☐ STATION _____ STATION _____

ZONE _____ ELEVATION _____ NORTHINGS (Y) _____ EASTINGS (X) _____

SKETCH: (Include reference tie or witness points, remarks and topo of area)



SURVEYOR'S CERTIFICATE

THIS CORNER RECORD WAS PREPARED BY ME OR UNDER MY DIRECTION IN CONFORMANCE WITH THE LAND SURVEYORS ACT ON May 28 1975

SIGNED: _____

L.S. or R.C.E. No. _____

SEAL

COUNTY SURVEYOR'S CERTIFICATE

THIS CORNER RECORD WAS RECEIVED _____ 19 _____ AND EXAMINED AND FILED _____ 19 _____

BY: _____

TITLE: _____

DOCUMENT No. 1126251

STATEMENT ON BACK OF SHEET

YES ☐ NO ☐