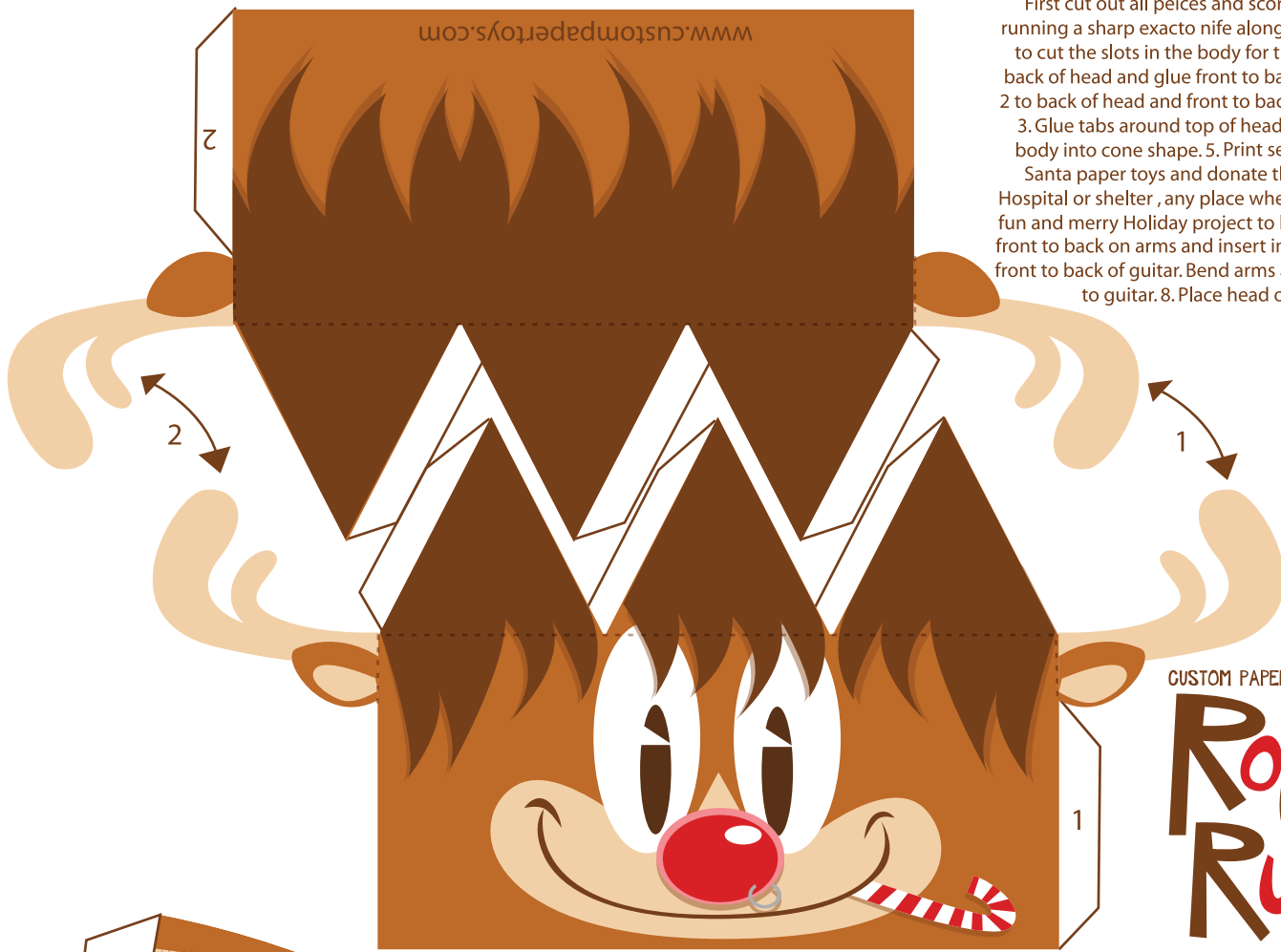


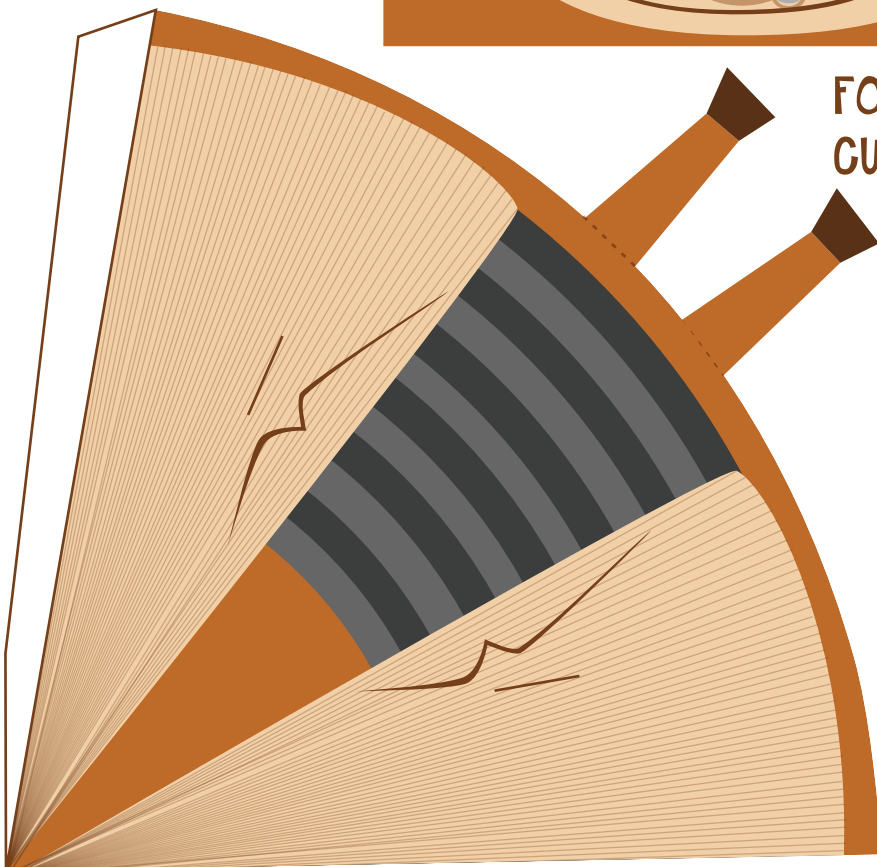
INSTRUCTIONS

First cut out all pieces and score fold lines by gently running a sharp exacto knife along the dotted lines. Be sure to cut the slots in the body for the arms. 1. Glue tab 1 to back of head and glue front to back of antlers. 2. Glue tab 2 to back of head and front to back of antler to form a ring. 3. Glue tabs around top of head to form a point. 4. Glue body into cone shape. 5. Print several copies of Rudy and Santa paper toys and donate them to a local children's Hospital or shelter, any place where kids could use a little fun and merry Holiday project to brighten their day. 6. Glue front to back on arms and insert into slots in body. 7. Glue front to back of guitar. Bend arms around and glue hoves to guitar. 8. Place head on body cone.



CUSTOM PAPER TOYS PRESENTS...

Rockin' Rudy



FOLD
CUT _____

