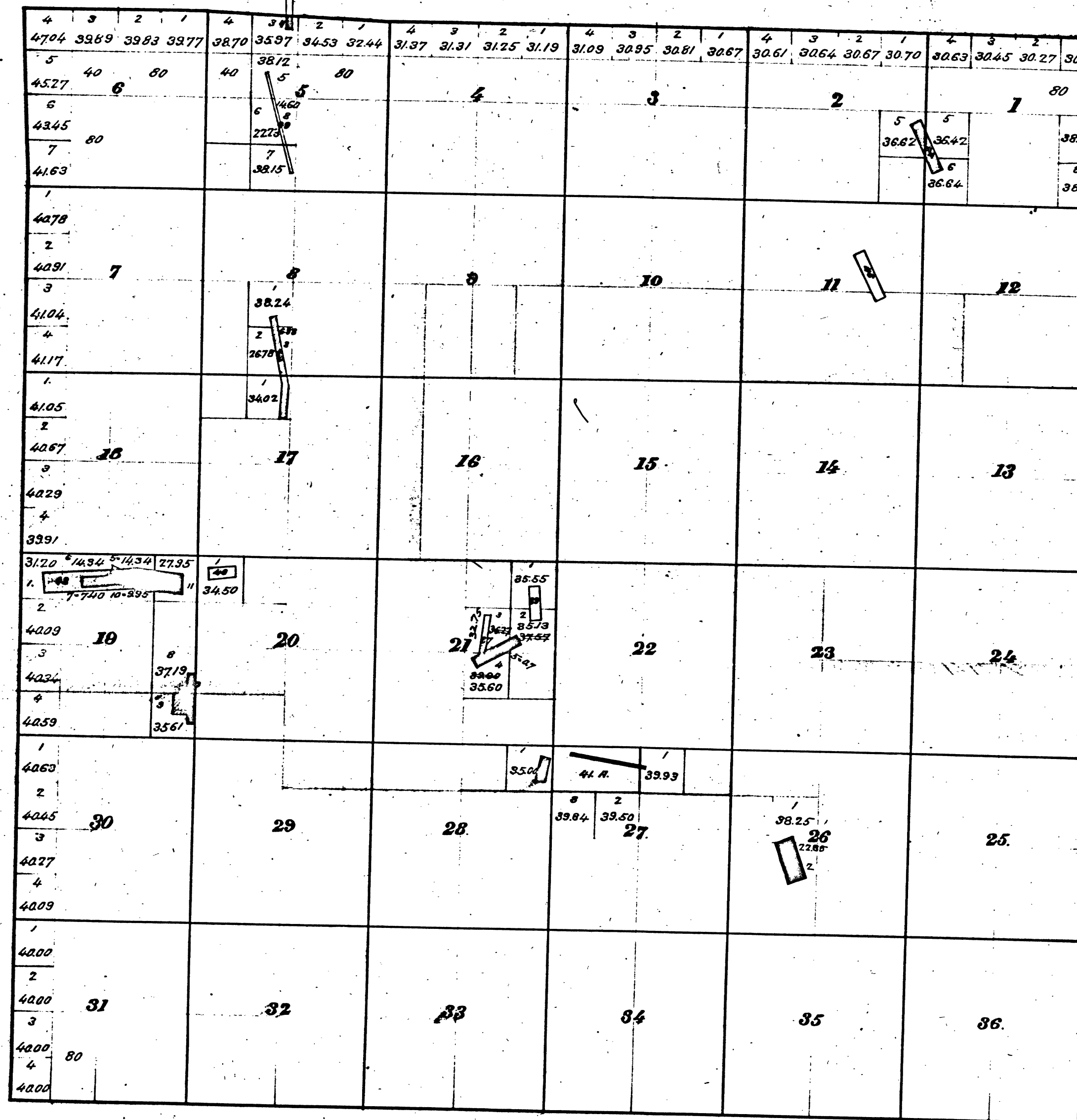


Township N<sup>o</sup> 6 North, Range N<sup>o</sup> 13 East, Mount Diablo Meridian.

\* Mineral Land returned May 27/1-

T.A.B.  
1875



MS ENTRY.

LOT.

202-200

221-127

189-174

225-117

325-193

246 289

397

417-425

m-8 489

949 604

870-733

1128-794

1860-

1893-

1897-889

1999-

37 Poor Man Quartz Mine

38 Woodhouse

39 Wolverine

40 San Bruno

41 A.B. Wet Gulch Q.M. N.S. M.S.

42 Lone Star Quartz Mine

43 Austrian

44 Bortola

45 Mosquito

46 China

47 Valentine Q.M.

48 Old Valentine

49 Ruckian Q.M.

50 Banner Q.M.

51 Lawson Q.M.

52 Don Reynolds Q.M.

53 Stoetzer Q.M.

Pat. Apl. 6 '74. No 829 V 51-11  
 . Nov. 25 '73 . 693 V 71-31  
 . Mch. 24 '74 . 816 V 70-29  
 . Feb. 15 '74 . 781 V 66-23  
 . Jan. 22 '76 . 1612 V 67-22  
 . Dec. 31 '74 . 1137 V 85-10  
 Cancelled Feb. 27 '79  
 { Pat. July 12 '76 No 1862 V 55-37  
 Cancelled Apr. 12 '77  
 Cancelled June 13 '78 (Secretary's decision)  
 Pat. Apl. 19 '80 No 3872 V 54-21  
 . Sept. 28 '80 . 4247 V 87-14  
 . June 15 '82 . 5962 V 76-11  
 S.G.L. Dec. 10 '81. V 54-13, 17, 15  
 . . . March 6 '82 V 88-2  
 . . . V 88-23 V 98-9  
 . . . Oct. 10 '82. V 75-4, 5

573. L.S. Bismark Plover

Pat. Sept. 10 '73 No 3398.

The above Diagram of Township N<sup>o</sup> 6 North, Range N<sup>o</sup> 13 East, of Mount Diablo Meridian, correctly shows the amendments made in accordance with the Plats of Mining Surveys approved to date.  
 U.S. Surveyor General's Office.  
 San Francisco California  
 October 15<sup>th</sup> 1875

*John Stanton*  
 U.S. Survey Genl. Cal.

DEPARTMENT OF THE INTERIOR,  
 GENERAL LAND OFFICE,  
 Washington, D. C. *Sept. 5, 1885.*  
 I hereby certify that this is a true copy  
 of the plat of official survey of the lands  
 to which it relates, on file in this office.

*H.W. Johnston*  
 Recorder, General Land Office.