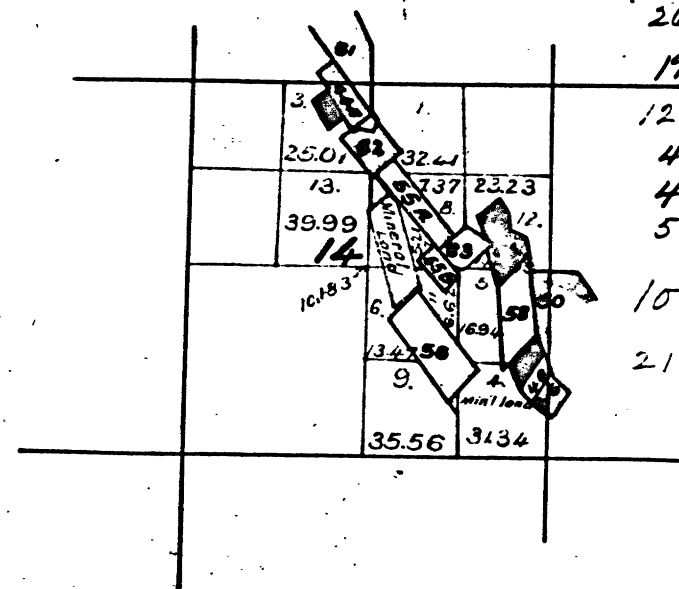


Township N°2 North, Range N°13 East, Mount Diablo Meridian.

T. 2 N. R. 13 E. M. D. M.

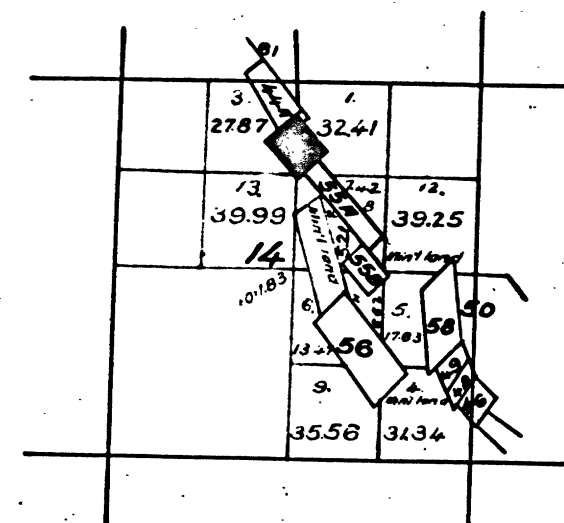


- | | |
|---------|-------------------------------|
| 264-44A | Chaparral Hill Quartz Mine |
| 172-46 | Morgan G. & S. " |
| 1244-48 | Union " |
| 420-49 | Kentucky " |
| 414-50 | Irvin & McMillan Placer Mine |
| 576-52 | McCreight & Reed Quartz Mine. |
| 1000 | 55A Vanderbilt " |
| | 55B Vanderbilt Mill Site " |
| 2138-56 | Extension Quartz Mine |
| 58 | Iron Rock " |
| 61 | Felicie Placer Mine. |
| 62 | Rothchild Quartz Mine. |
| 63 | Bright Star " |
| 64 | California Ophir. |

The above diagram showing amendments to Sec. 14 Township N°2 North, Range N°13 East, Mount Diablo Meridian, is correctly copied from the original map as amended and on file in this Office.
U.S. Surveyor General's Office.
San Francisco, California.
July 14th 1885.

W. H. Brown.
U.S. Surv. Genl. Cal.

T. 2 N. R. 13 E. M. D. M.

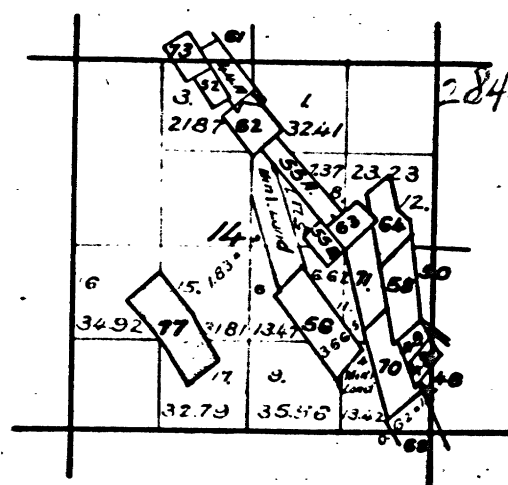


62 Rothchild Quartz Mine.

The above diagram showing amendments to Section 14, Township N°2 North, Range N°13 East, Mount Diablo Meridian, is correctly copied from the original map as amended and on file in this Office.
U.S. Surveyor General's Office.
San Francisco, California.
May 21st 1885.

W. H. Brown.
U.S. Surv. Genl. Cal.

T. 2 N. R. 13 E. M. D. M.

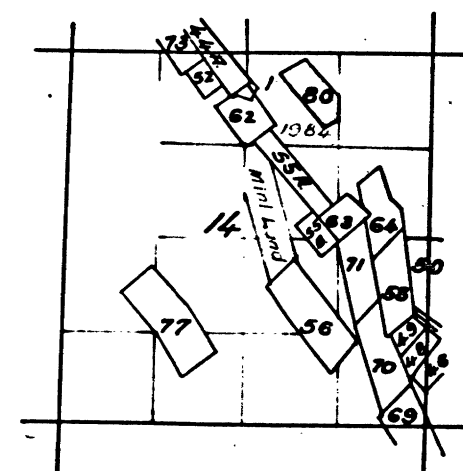


2845-77 Canepa Quartz Mine.

The above diagram of Section 14, Township N°2 North, Range N°13 East, Mount Diablo Meridian is correctly copied from the original map as amended and on file in this Office.
U.S. Surveyor General's Office.
San Francisco, California.
June 8th 1889.

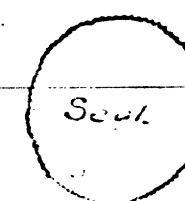
R. P. Hammond, Jr.
U.S. Surv. Genl. Cal.

T. 2 N. R. 13 E. M. D. M.



3299-
Lot 80 Peirano Quartz Mine.

The above diagram of Section 14, T. 2 N. R. 13 E. M. D. M. is correctly copied from the original amended map on file in this Office.
U.S. Surveyor General's Office.
San Francisco, California.
September 3, 1895.



W. S. Green.
U.S. Surv. Genl. Cal.

DEPARTMENT OF THE INTERIOR,
GENERAL LAND OFFICE,
Washington, D. C. *Feb 5, 1908*
I hereby certify that this is a true copy
of the plat of official survey of the lands
to which it relates, on file in this office.

H. W. Knappe
Recorder, General Land Office.

41 121

CHAINS

CHAINS
10 20 40 60 80 100 120

T. 2 N. R. 13 E. M. D.